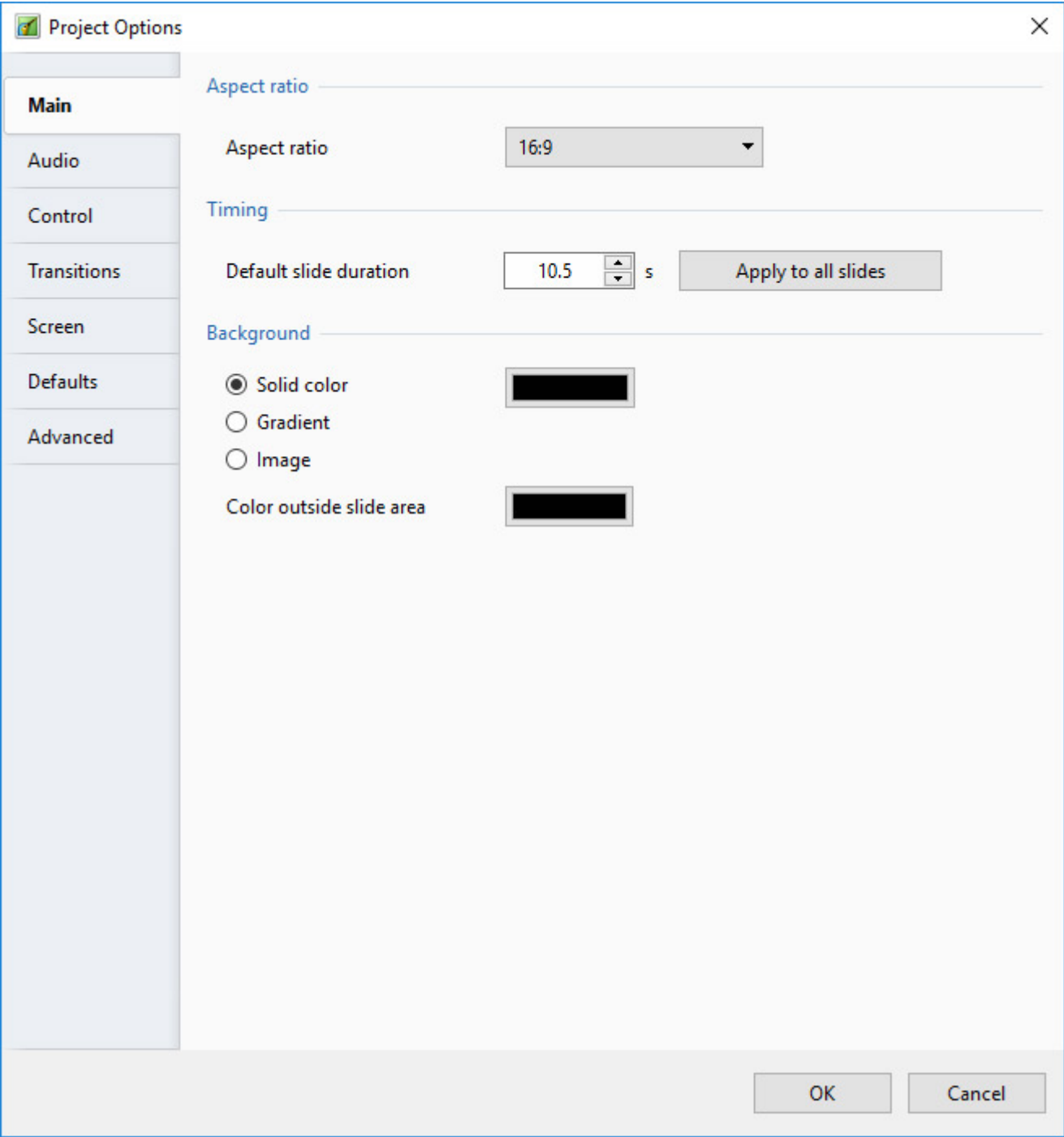


# Project Options

## Main Tab

### General

The “Main” tab is shown below :



- “Aspect Ratio” enables the desired aspect ratio of the display screen to be selected. Users should consider the parameters of the main display for the show when selecting aspect ratio.
- “Timing” allows setting of the default time for all new slides and can be applied to all existing

slides. A useful technique for certain types of show is to start with a standard duration and then modify the times of individual slides to suit the required application.

- “Background” allows the user to specify the type and/colour of the Background for all slides.

## Aspect Ratio

### Aspect Ratio of Images

The aspect ratio of images from current cameras are normally:

- 3:2 - Typically 3000×2000; 6000×4000
- 4:3 - Typically 1024×768; 1600×1200; 4000×3000
- 16:9 - Typically 1920×1080

### Aspect Ratio of Monitors

- 4:3 - Typically 1024×768; 1440×1080; etc
- 16:9 - Typically 1280×720; 1920×1080; etc
- 16:10 - Typically 1280×800; 1920×1200; etc

### The Aspect Ratio of the Project

Typically, this chosen to suit the Aspect Ratio of either:

- The Camera Image's Aspect Ratio
- The User's PC Monitor
- The User's TV (Typically - 1920×1080 at the time of writing)

Matching these choices is a sometimes daunting task for the beginner. If you want the ease of inputting your camera's images into a show without cropping, then an Aspect Ratio for the Project is chosen to suit the camera. This might result in the Show having “black bars” at the sides or top and bottom of the Monitor or TV.

If you want your show to “Fill the Screen” on your monitor or TV then the Aspect Ratio must be chosen to suit. This might result in the Camera's Images not filling the width of the Project or being cropped at the top and bottom of the screen.



The example above shows the full screen view (left to right) of:

- A 4:3 image in a 4:3 Project on a 4:3 Monitor Screen
- A 3:2 image in a 3:2 Project on a 4:3 Monitor Screen

- A 16:9 image in a 16:9 Project on a 4:3 Monitor Screen





The example above shows the full screen view (top to bottom) of:

- A 4:3 image in a 4:3 Project on a 16:9 Monitor Screen
- A 3:2 image in a 3:2 Project on a 16:9 Monitor Screen
- A 16:9 image in a 16:9 Project on a 16:9 Monitor Screen

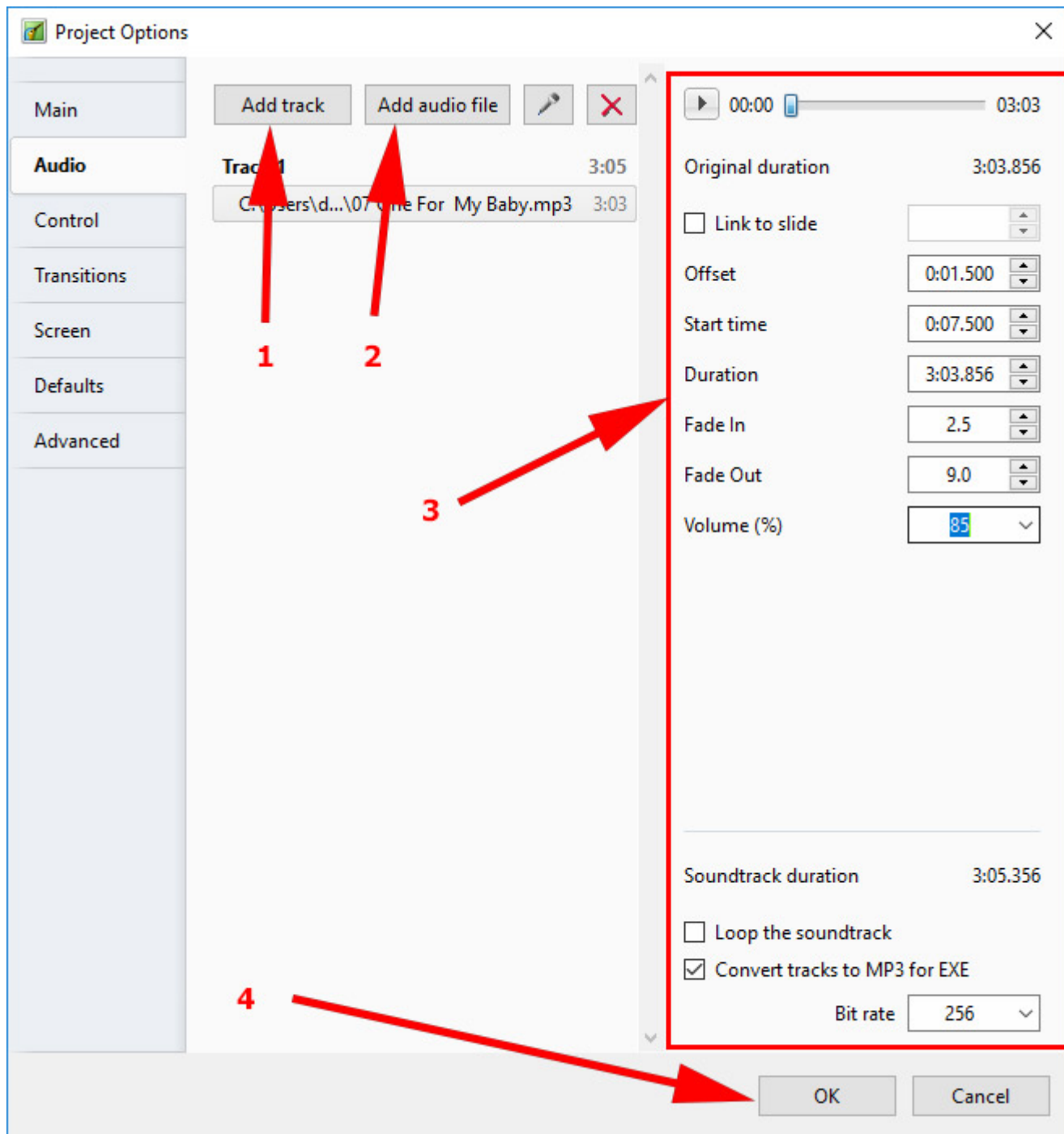
## Which choice to make?

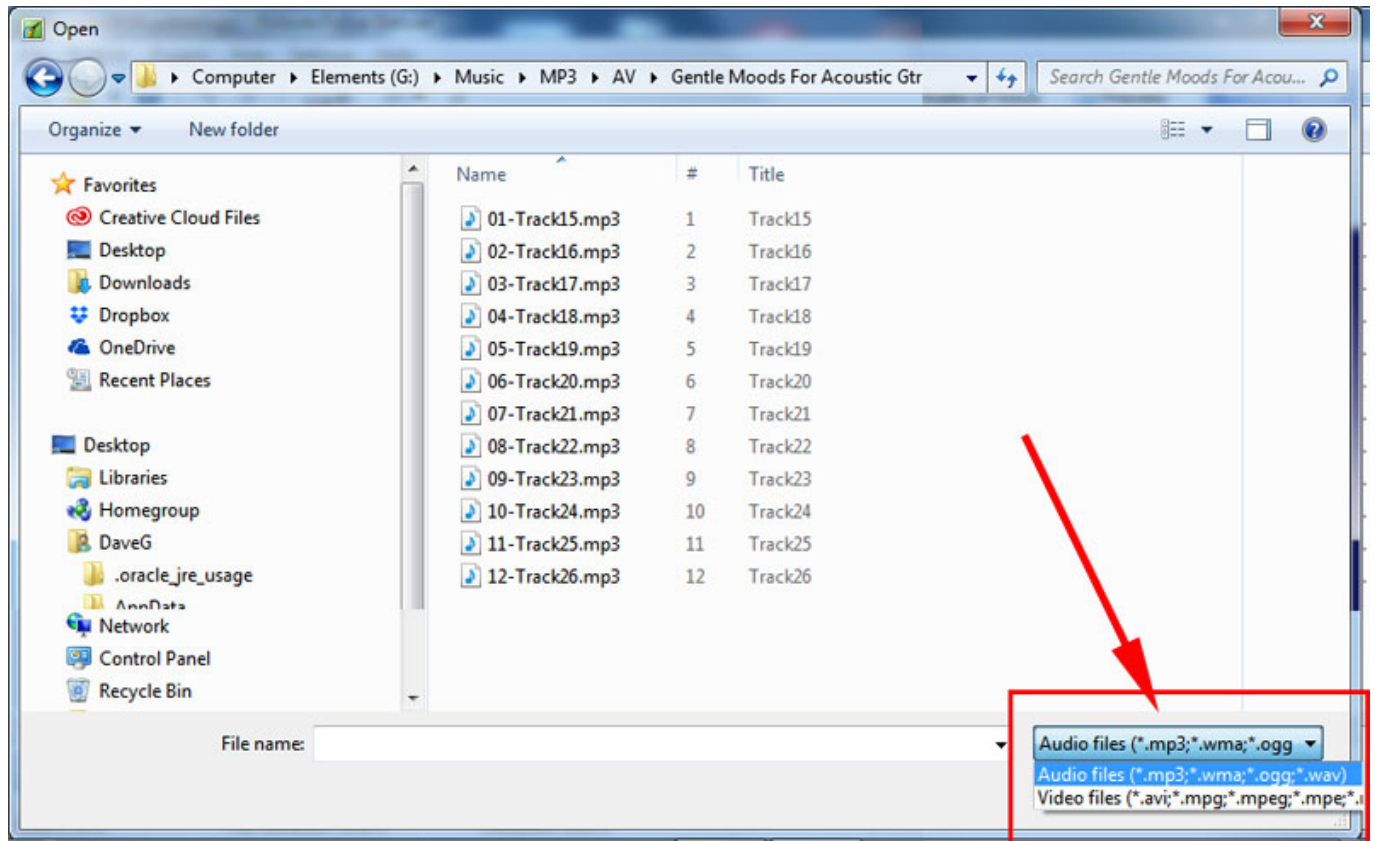
For the beginner, a starting point would be to make the Project Aspect Ratio the same as the Camera's Aspect Ratio. Images can then be dropped into a project without modification and immediately published as an EXE without further adjustments. As the user gets more proficient then choosing an Aspect Ratio to suit the output device (Monitor/TV) might be more appealing.

## Audio Tab

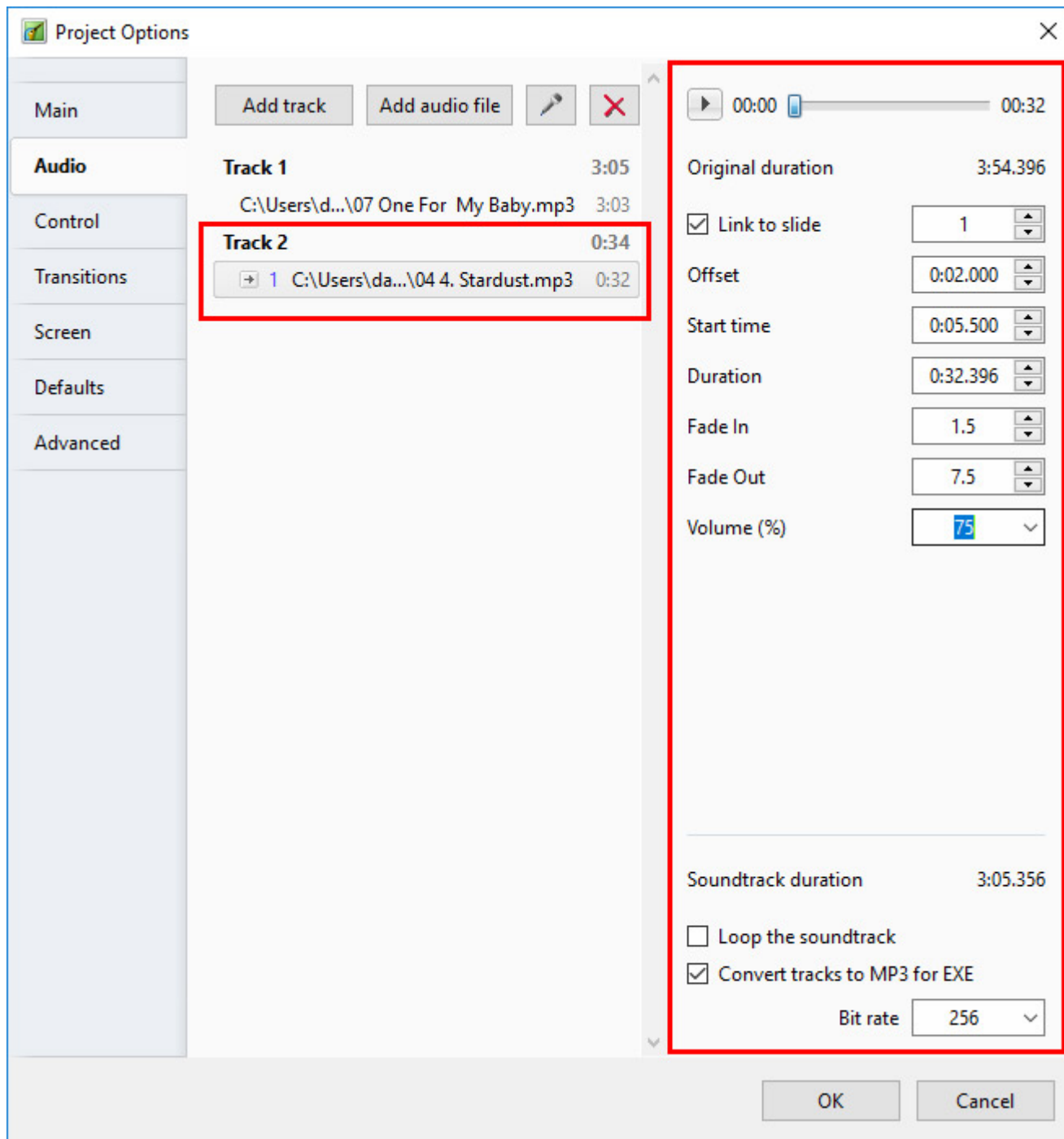
### Adding Audio Files:

In Project Options / Audio Tab





The following example shows a typical simple layout for the Project Options / Audio Tab:



The Audio File in Track 2 can be seen to have the following properties:

The PLAY Button will play the 32 second audio file in the highlighted Audio File for testing purposes

The Original duration of the file is 3m 54.396s

The Audio File in Track 2 is linked to slide 2 and if slide two is re-positioned the Audio File will also be moved by the same amount in the Timeline (separate track).

(N.B. When an Audio Clip is initially linked to a slide its position may be adjusted manually using the "Offset" control - or dragged in the Timeline).

The Audio File is Offset by 2s with respect to the beginning of Slide 2 to which it is linked

The Start Time of the Audio File in Track 2 is 5.5s from the beginning of the original Audio File

The Duration of the audio file has been trimmed to 32.396s

A Fade In of 1.5s has been applied to the Audio File in Track 2

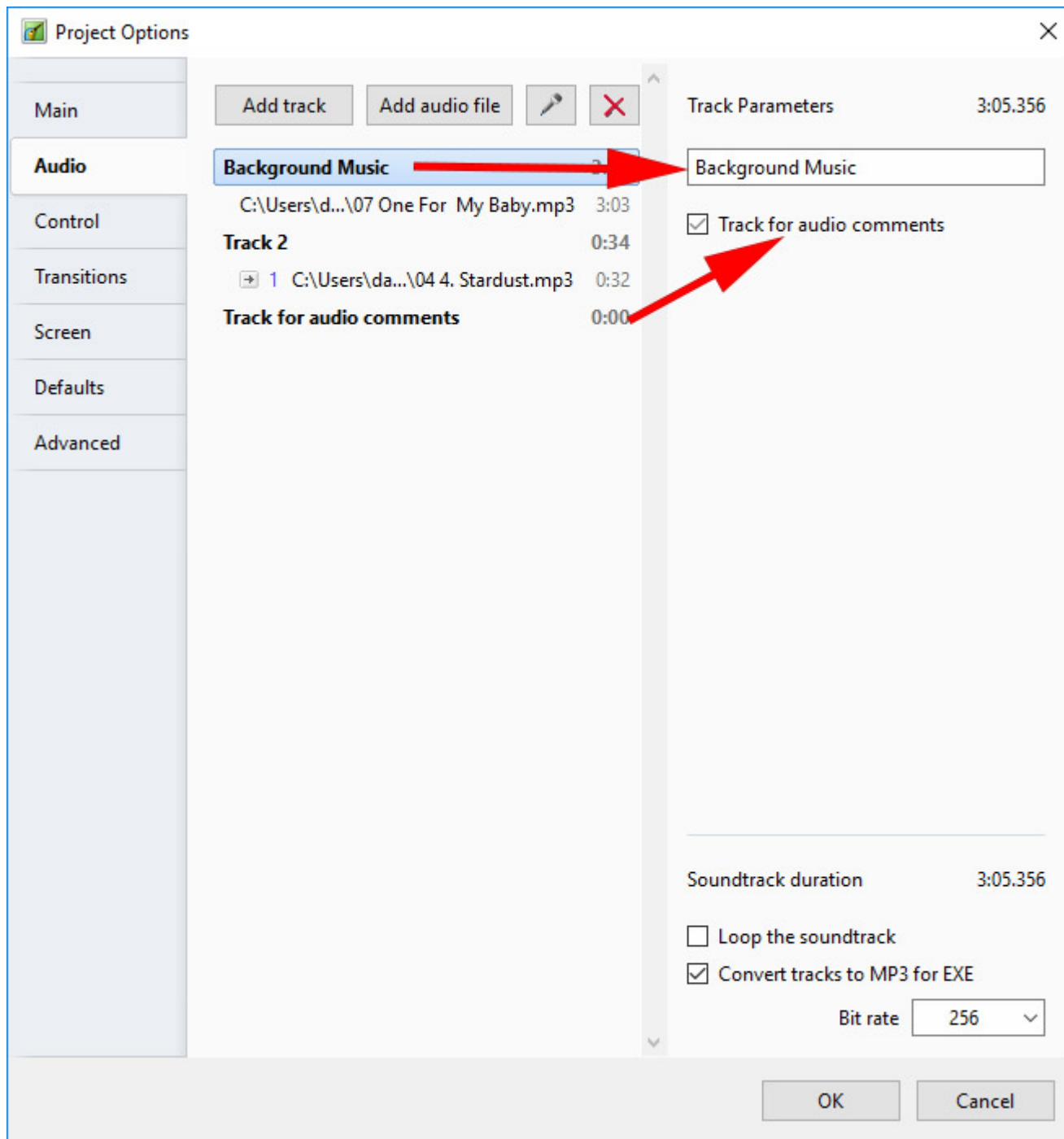
A Fade Out of 7.5s has been applied to the Audio File in Track 2

The total Soundtrack Duration is calculated as 3m 5.356s

All Tracks in the project will be converted to an MP3 at a Bit Rate of 256Kbps when an EXE file is created.*(Not available in the Essentials Edition).*

## **Renaming Tracks**

A Track can be renamed and/or designated to be a “Track for Audio Comments”



## Convert tracks to MP3 for EXE

When this option is turned on, PicturesToExe automatically converts all audio tracks to a single MP3 audio for the EXE show. The Bit Rate of the converted file can be adjusted from 64 to 320Kbps. High values are better quality.

This option is useful if you work with audio clips in WAV format or adjust the duration of clips using the Envelope Function. See [Envelope](#). For maximum efficiency when using this feature the use of WAV files is advisable, though not essential.

This option will optimize the size of the EXE file.

## MP3 Recommendations

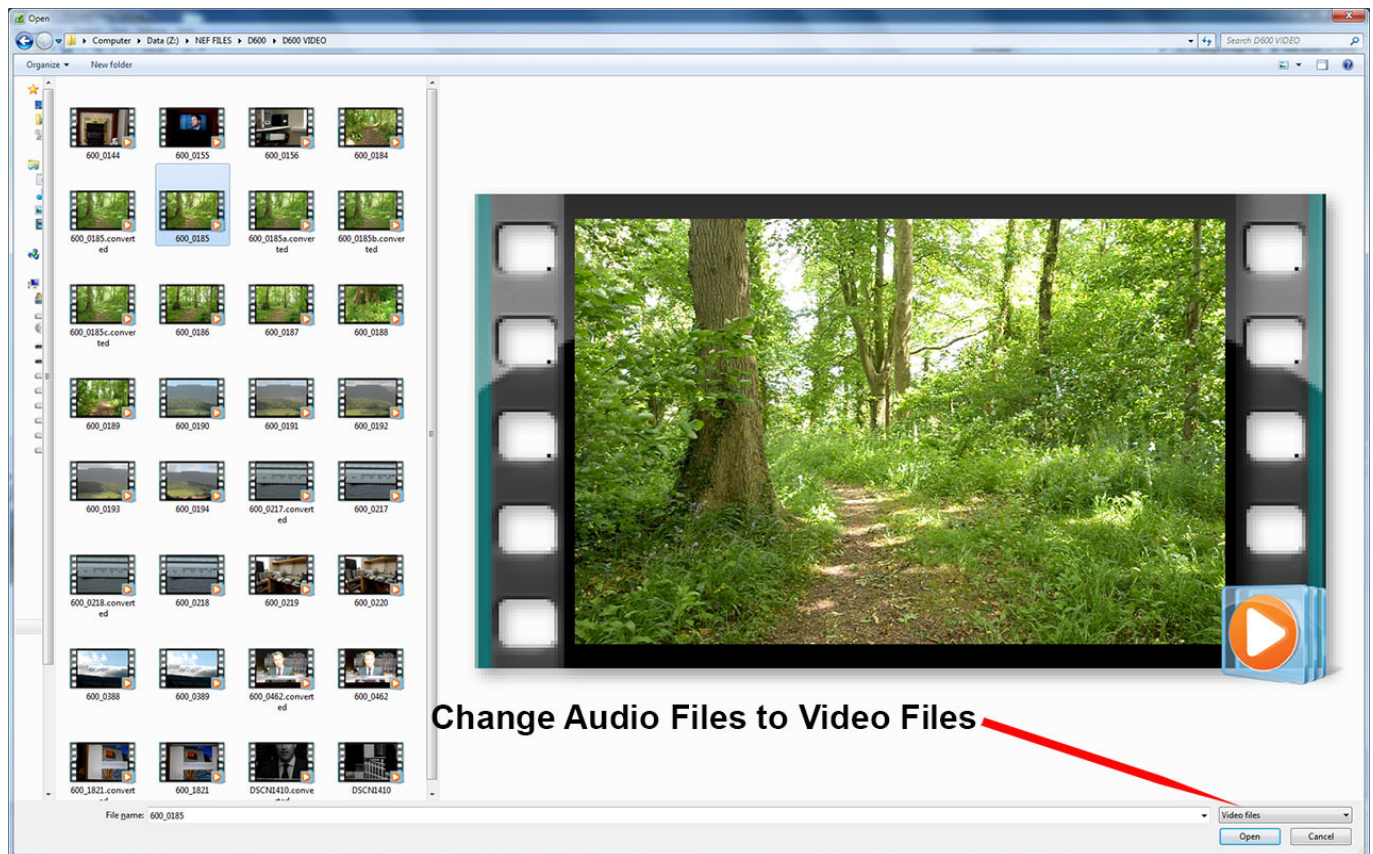
When preparing MP3 Audio files for use in PicturesToExe the following is recommended:

- Constant Bit Rate 128 - 256 Kbps
- Sample Rate: 44100 Hz
- Stereo

## Adding/Extracting the Audio of a Video Clip to an Audio Track

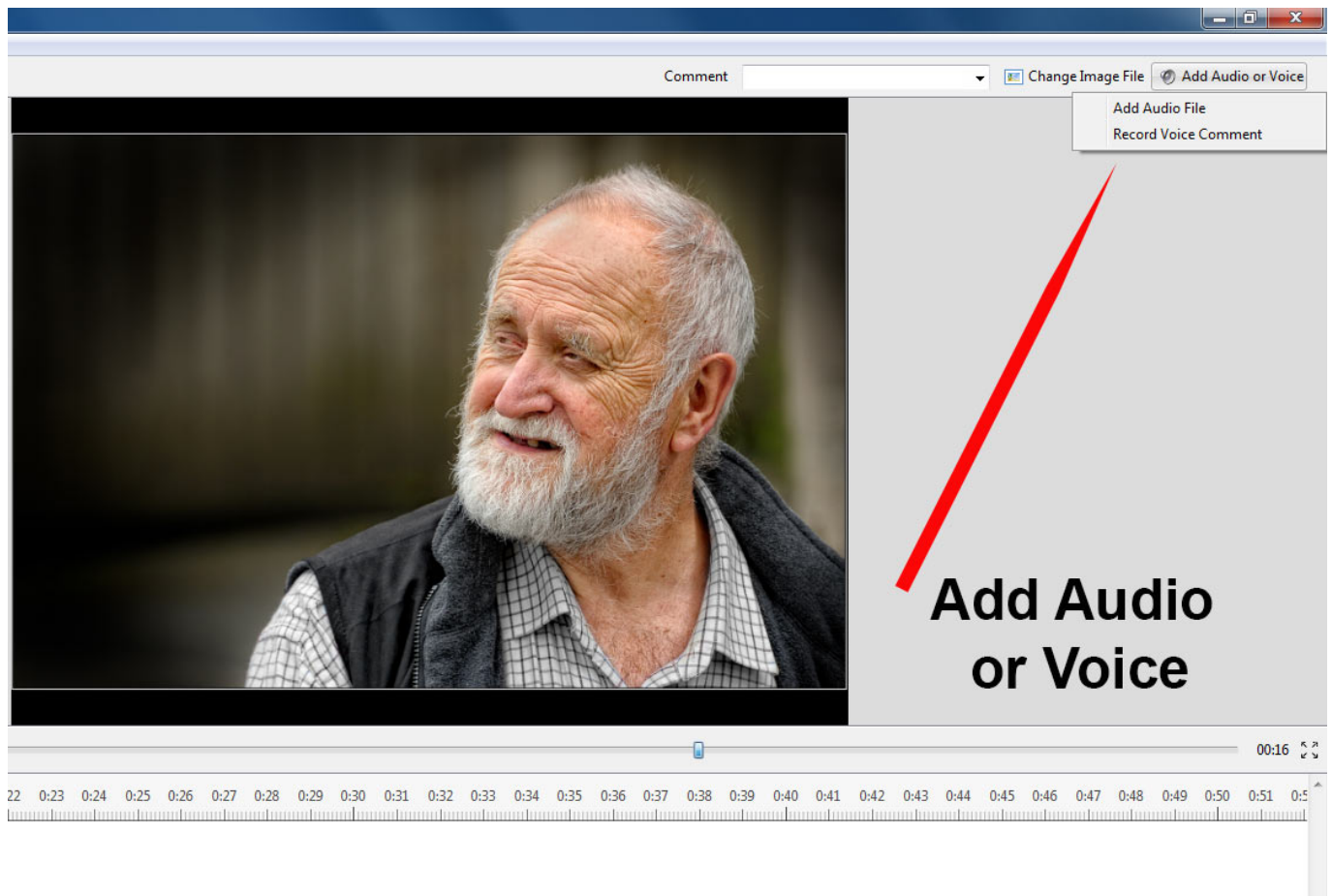
The Audio of a Video Clip can be added to an Audio Track and the Envelope can then be applied to it. Add the Video Clip by dragging into the Slide Line and then, in Objects and Animation/Properties Tab, Mute the Audio of the Video Clip.

To add the Audio of the Video Clip to a Track go to Project Options / Audio Tab and Add a Track and then Add Audio File. In the bottom right corner of the browser change the "Audio Files" drop-down type to "Video Files" and navigate to your Video Clips Folder. Select your Video Clip and click on OPEN. Click OK in Project Options to see the Audio of the Video Clip in its Track. The envelope of the Audio of the Video Clip can then be adjusted as required.



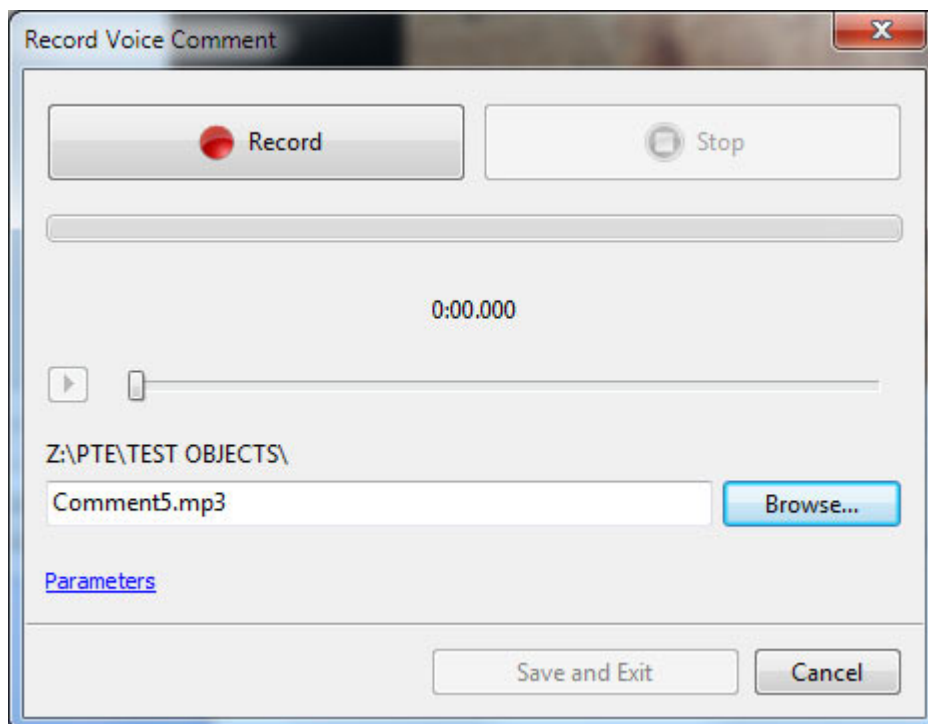
## Adding Audio or Voice Comments

Audio Clips and/or Voice Comments can be added to a Slide using the "Add Audio or Voice" Tool or by clicking on the "Microphone" icon in the Project Options/Audio Tab.

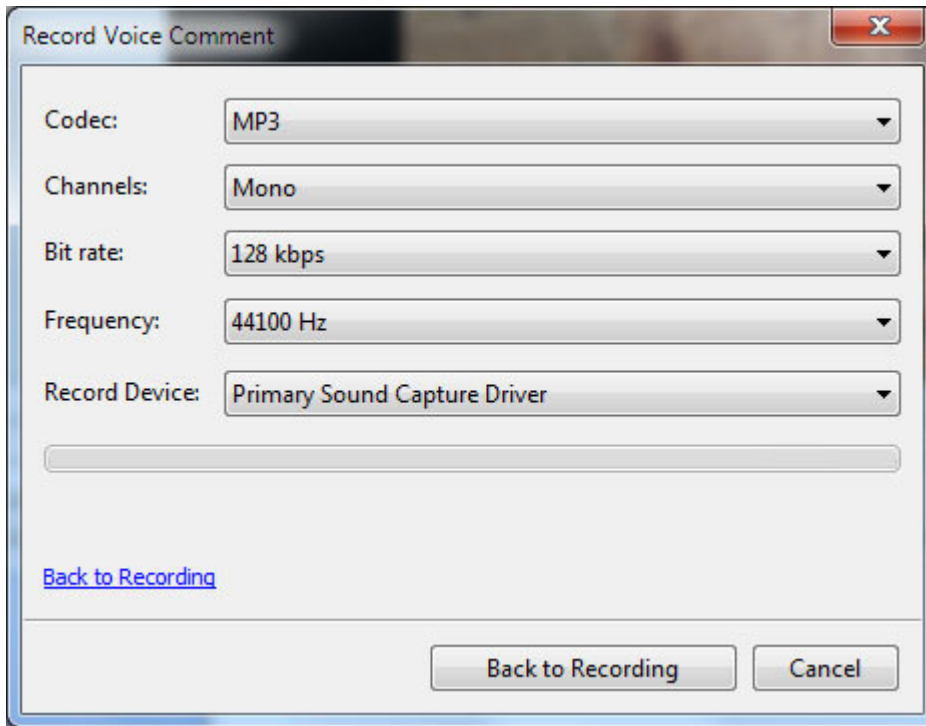


Click on “Add Audio File” to browse for the required Audio File and clicking on “Open” adds the file to an empty track. It can then be positioned and its envelope adjusted as required.

Click on “Record Voice Comment” to see the following:



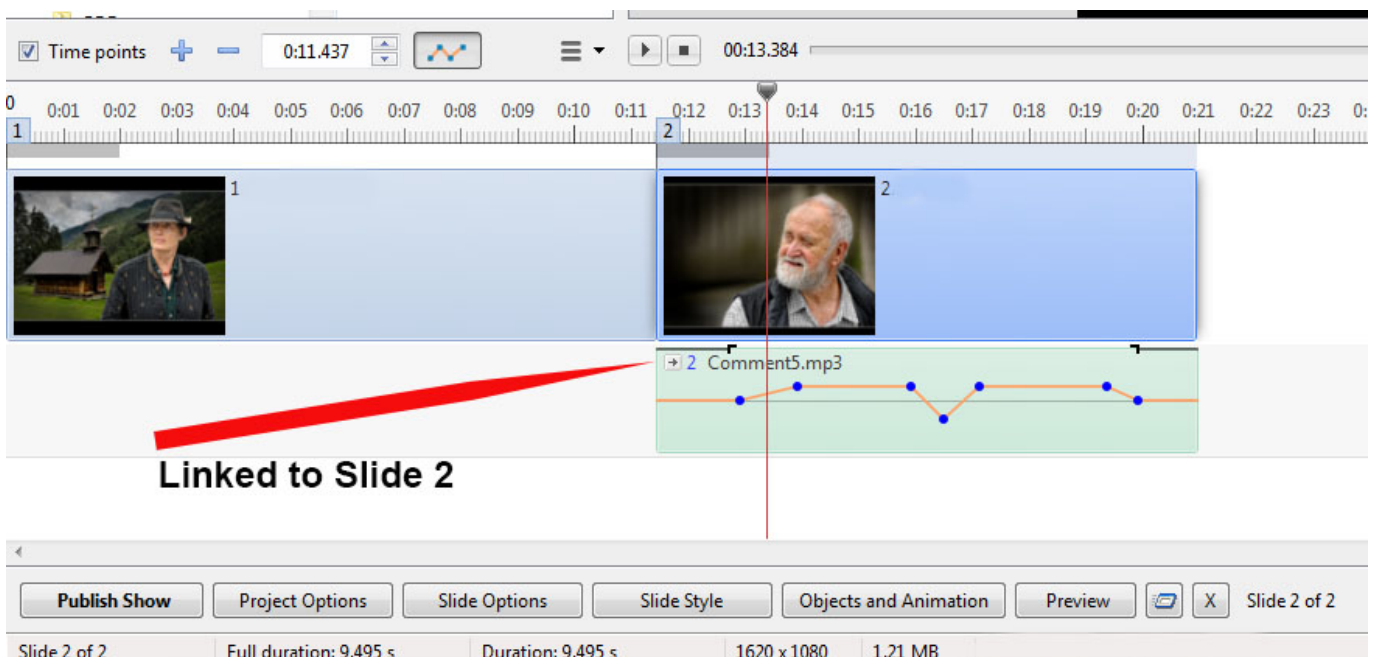
Click on Parameters to make adjustments to the File Type etc



- You can choose to record as MP3 or WAV
- You can choose Mono or Stereo recording
- You can choose Bit Rates from 32 to 320kbps
- The Recording device will vary according to the users system

When finished you can return “Back to Recording”.

Click on “Record” to start the recording and “Stop” when finished. The Voice Comment is added to an empty track.

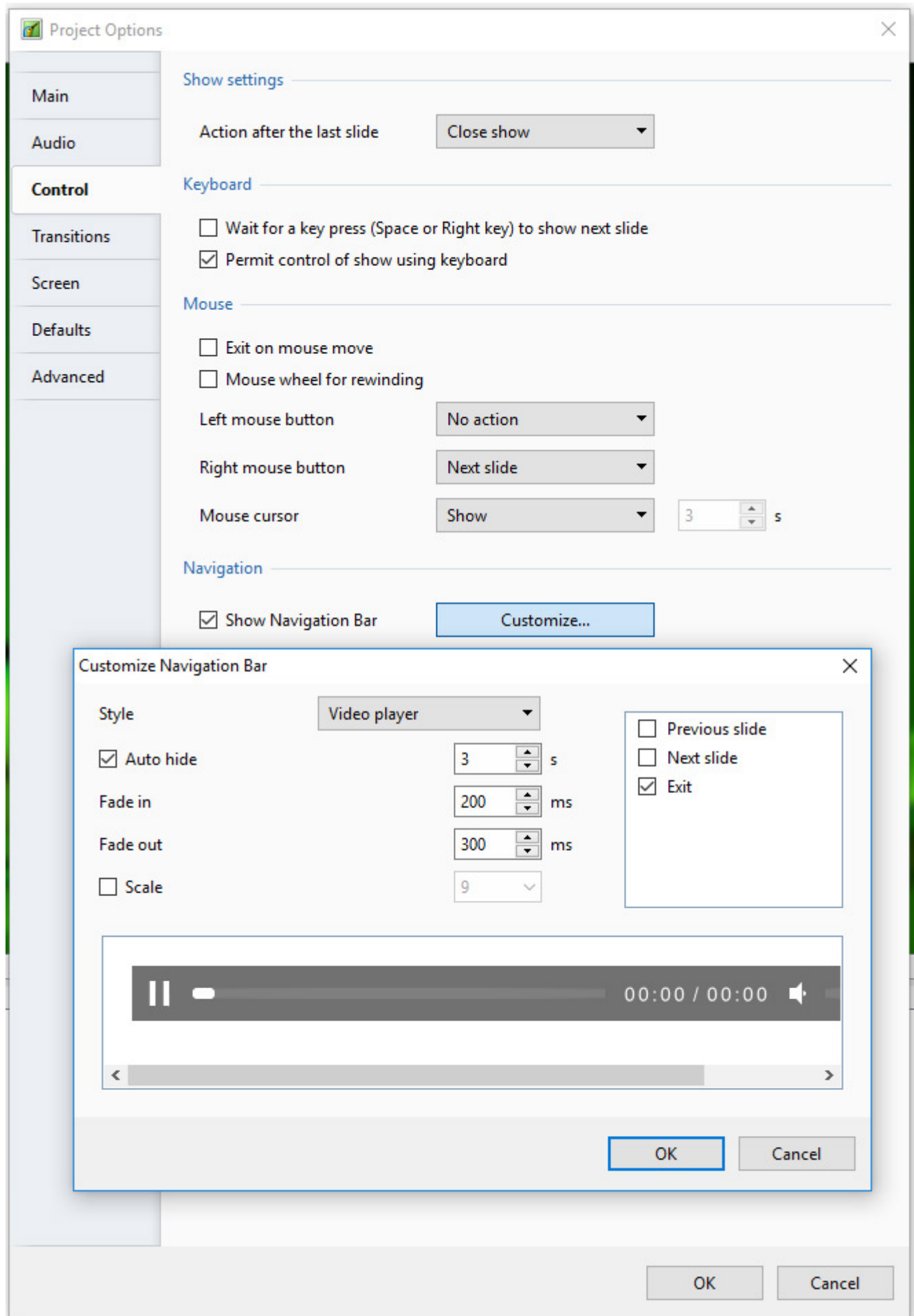


It is also possible to record the Voice Comment in “real time” while the Mini-Player is running or in the Audio Tab of Project Options.

Also see [The Timeline View](#)

## Control Tab

The “Control” tab with its 4 sections is shown below :



## Show Settings

- Action after last slide:
  - Close Show
  - Repeat Show
  - Stop Show

## Keyboard

The “Keyboard” section:

- **Wait for key press ....** - Selecting this option enables a show to be controlled manually and applies to the whole show. An alternative method is to use the settings in “Slide Options/Main”, but note that this applies to individual slides only. Note also that this option works whether the second option is selected or not.
- **Permit control of show using keyboard** - This second option is provided to enable the user to override the default time of individual slides. For example the slide duration may be 10s. By selecting this option the next slide in the Slide line can be made to appear before the 10s has elapsed.

For many shows, it is likely that a user would leave these two options un-selected.

## Mouse

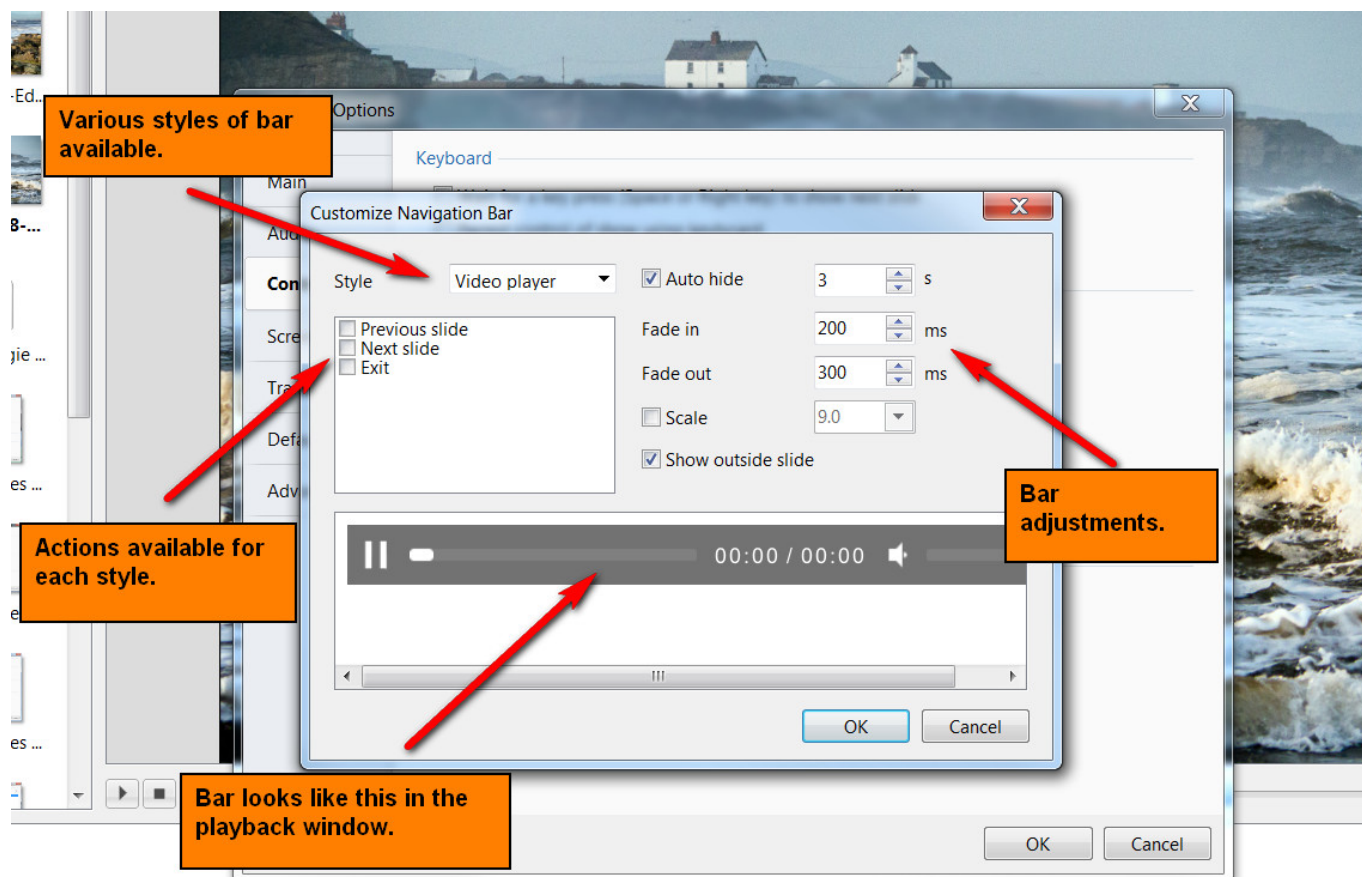
The second section deals with mouse actions. These settings are independent of the “Keyboard” settings.



Various alternative actions are available. Most of these should be self-explanatory. The “mouse wheel for rewinding” allows the show to be re-wound when in the play mode.

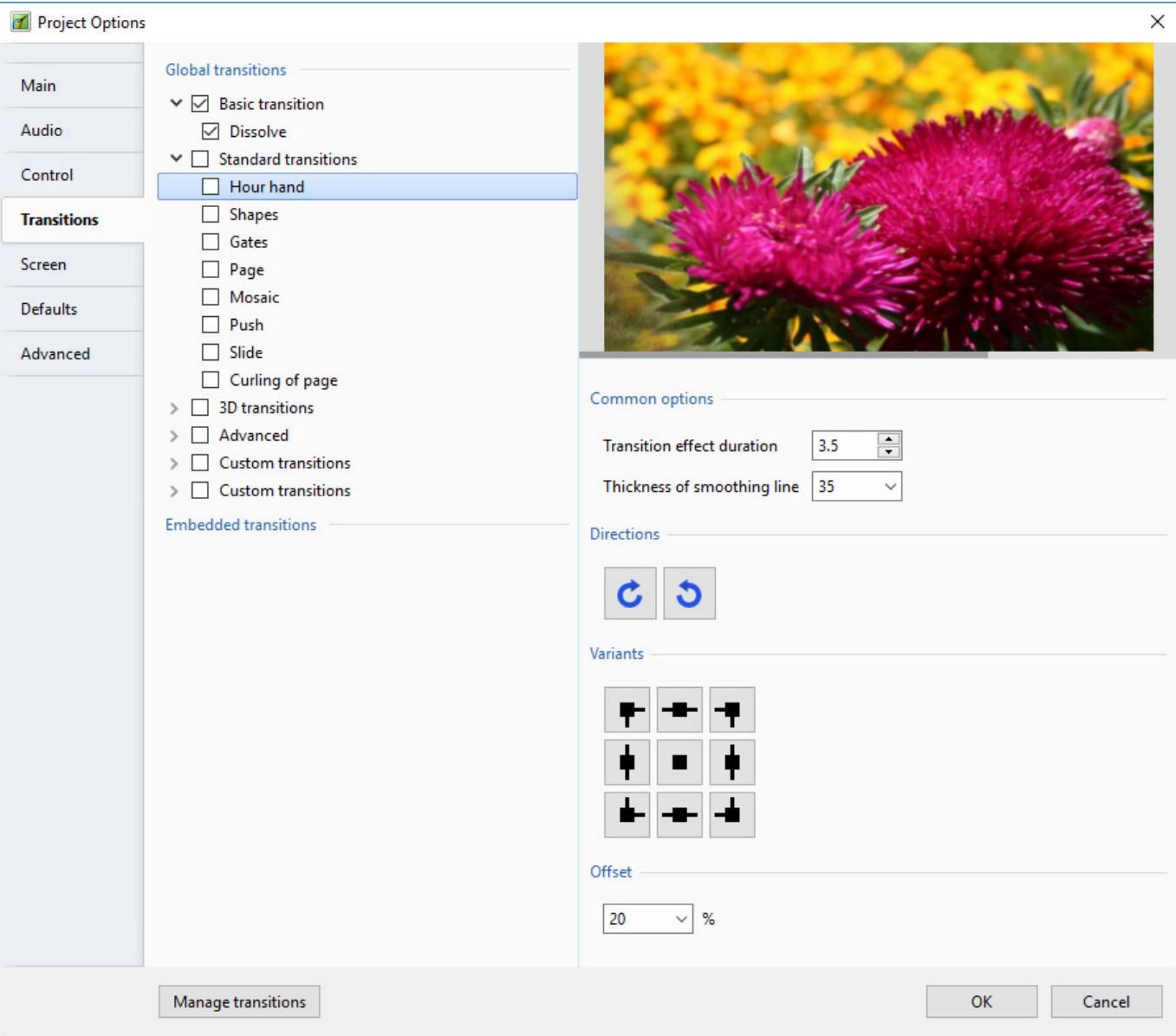
## Navigation Bar

The last section controls operation of the “Navigation Bar”. If “Show Navigation Bar” is selected, an additional dialog box shown below opens when the “Customize” button is clicked and a navigation bar opens on screen during playback. This enables the user to perform various operations as specified in the customize dialog box. Note that the show needs to be set to “wait for keypress...” or individual slides set to “wait for keypress to show next slide”, if a manually operated slide show is required.



## Transitions Tab

The “Transitions” tab is shown below with one of the various types of transitions selected to show the range of controls which can be applied to each transition. The range of parameters which can be controlled varies with the type of transition selected. The default transition is “Dissolve”. At the top righthand side is a viewer which shows the effect of the transition selected.



See also:

[Custom Transitions](#)

## Screen Tab

The “Screen” tab with its 3 sections is shown below :

Project Options

Main

Audio

Control

Transitions

Screen

Defaults

Advanced

Screen

Mode

Fullscreen

Sharpness control

Unsharp mask

None

0

Watermark

Show watermark

Offset

20

Right-Bottom

Opacity

100

Size

30

OK

Cancel

Mode

<https://docs.ptavstudio.com/>

Printed on 2024/05/18 19:08

Project Options

Main

Audio

Control

Transitions

Screen

Defaults

Advanced

Screen

Mode

Fullscreen

Sharpness control

Unsharp mask

Watermark

☐ Show watermark

Offset20

Opacity100

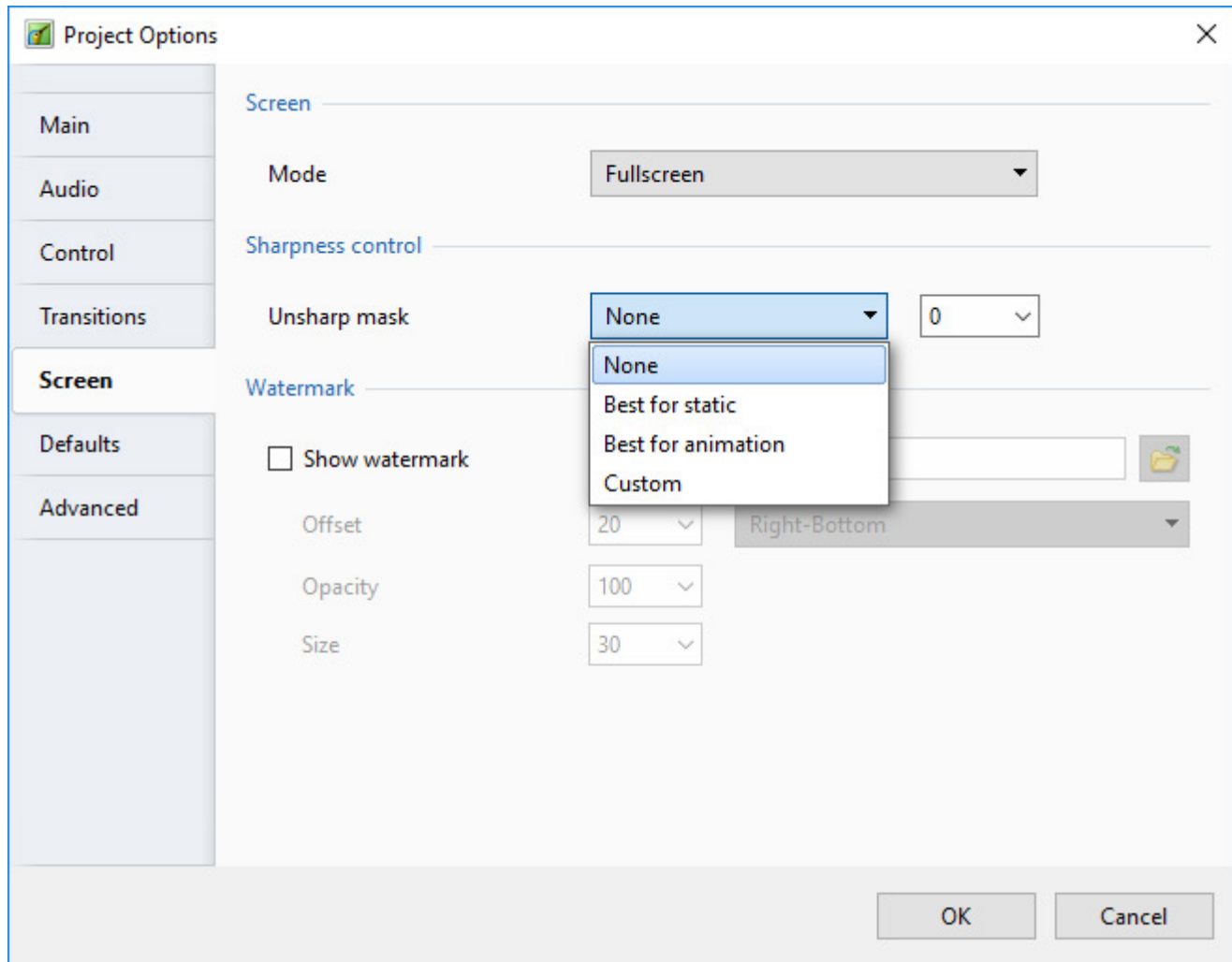
Size30

Right-Bottom

OK

Cancel

Unsharp Mask

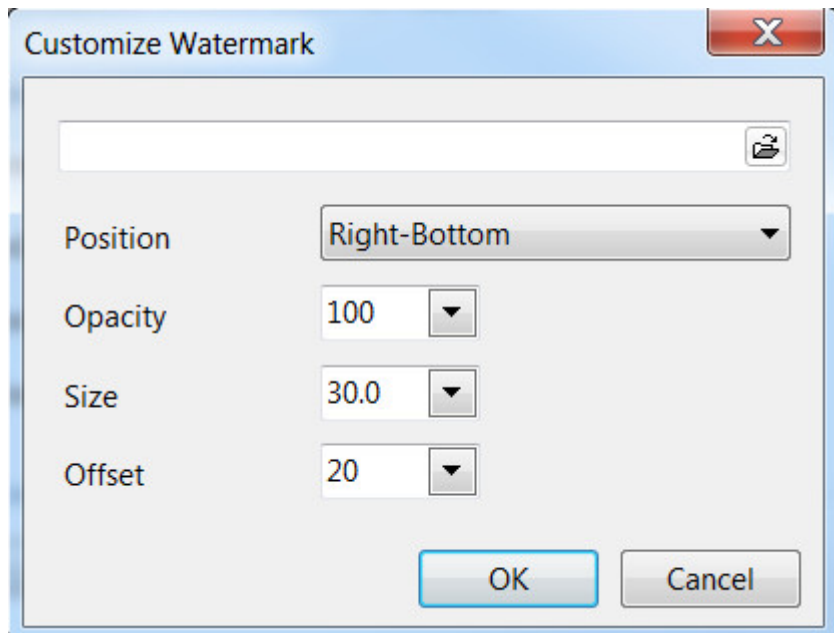


- Unsharp Mask applied here will affect all objects in all slides in the whole Project
- The effect can be viewed in real time in the SLIDE VIEW

## Watermark

- Add a Watermark

This enables the user to add a watermark to all images. If the option is selected, a dialog box as shown below will open and enable a watermark file to be chosen and the size and location on each image determined.



## Defaults Tab

This Tab is not available in the Essentials Edition.

The "Defaults" tab with its 2 sections is shown below :

**Project Options**

**Main**

**Audio**

**Control**

**Transitions**

**Screen**

**Defaults**

**Advanced**

**Text comment for new slides**

Customize font... Insert template

Apply to all slides

**Main image for new slides**

☐ Display shadow behind slide image Customize...

Apply to all slides

100 % of the slide to show main images

Apply to all slides

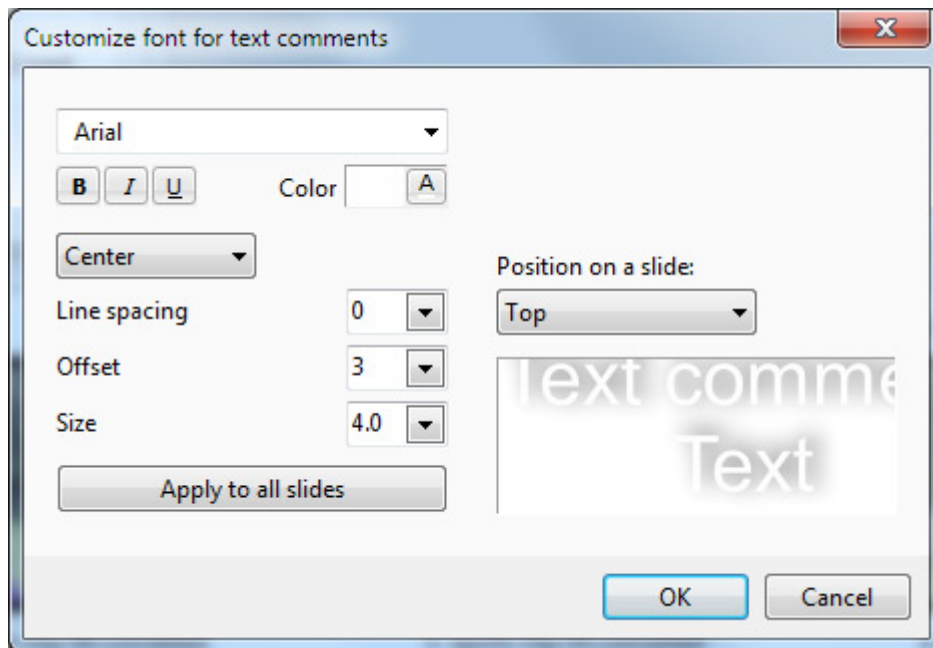
☐ Cover

Apply to all slides

OK Cancel

## Text comments for new slides

This provides a facility to insert text into slides and control the text formatting. The normal practice is to click on the "Insert template" button and choose the text required to be inserted. The code for this text will then appear in the box below the "Customize font" button. Additional text items can be added if required. When all the text items have been added, clicking the "Customize font" button will reveal the dialog box shown below and the added text can be formatted as required. A comment is required regarding the point in time at which this setting is applied. If applied BEFORE any slide have been added to the Slide list, then the text additions will apply to all slide subsequently added. If however this setting is selected AFTER slides have been added, then the "Apply to all slides" button must be clicked to ensure that the change is applied to all the currently added slides. Note also that if the user wishes to remove the added text, it is necessary to go into the dialog box, deleted the text and then click the "Apply to all slides" button to remove the text from all added slides.



## Main image for new slides


- If “Display shadow behind slide image” is selected, the “Customize” button will allow the parameters of the shadow to be selected, e.g. color/size/shape etc.
- The next control affects the size of the slide ; if the slide size is 100% then no shadow will be seen. Note also that this control can be used in conjunction with the “Screen/Background” tab to control the background color on which the slide appears. The “Apply to all slides” button should be used as described previously to apply the changes to all slides already inserted into the Slide line.
- The “Cover Slide” tick box allows this option to be set as the default for new images in the Project. If left unticked the “Fit to slide” option is set for the Project. The “Apply to all slides” button should be used as described previously to apply the changes to all slides already inserted into the Slide line.

*The “Cover Slide” tick box added to Project Options from Version 8.0.17 onwards*

## Advanced Tab

*This Tab is not available in the Essentials Edition.*

The “Advanced tab with its 3 sections is shown below :

 Project Options

×

Main

Audio

Control

Transitions

Screen

Defaults

Advanced

Protection of slideshow

☐ Ask for Password

☐ Time limited usage


Show settings

Advanced options

Custom windows

Show settings

☐ Icon for executable file




☒ Synchronize soundtrack and slides

☒ Pause when slideshow window becomes inactive

Run application or slideshow on exit

Do not run



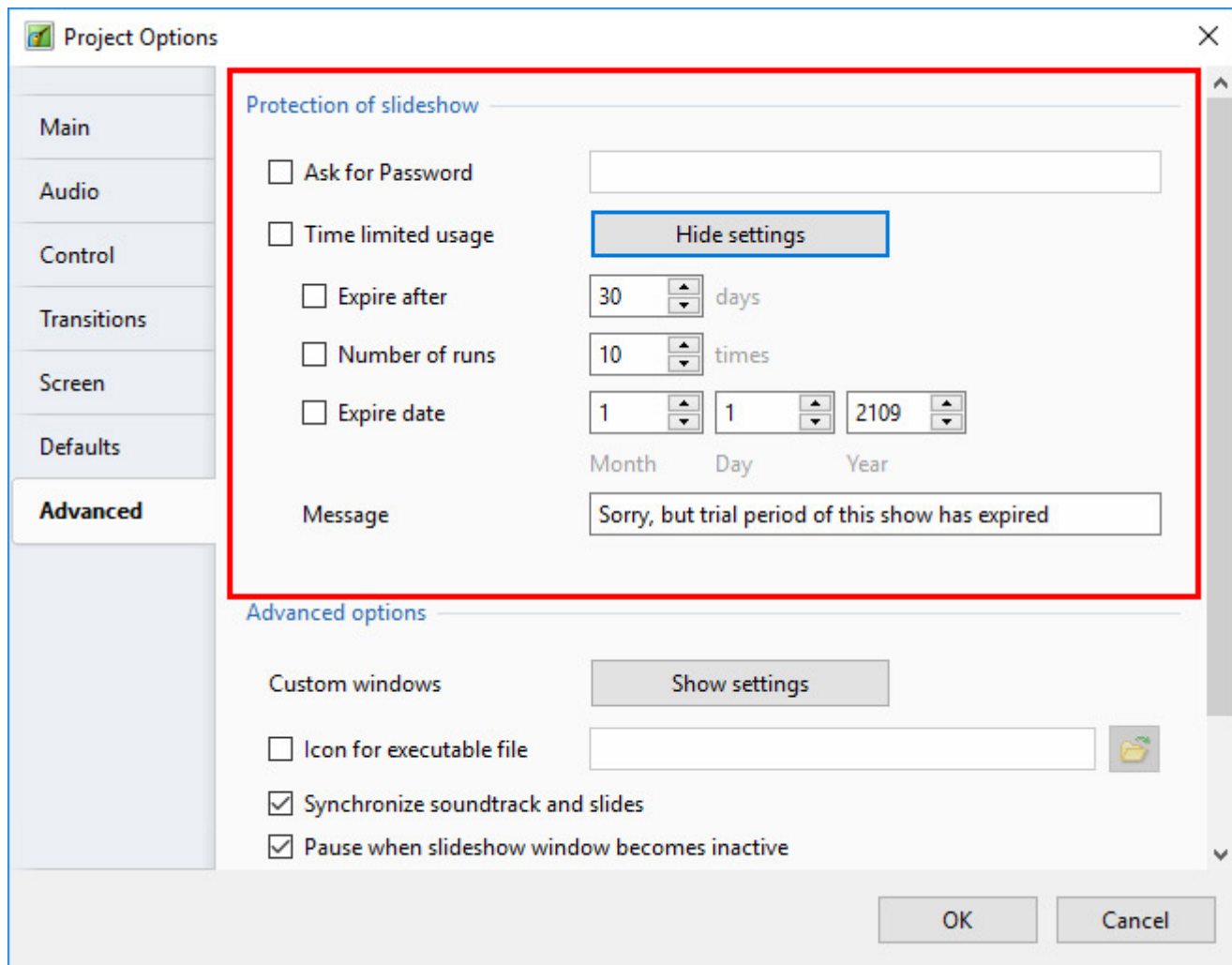
OK

Cancel

## Protection of Slideshow

<https://docs.ptavstudio.com/>

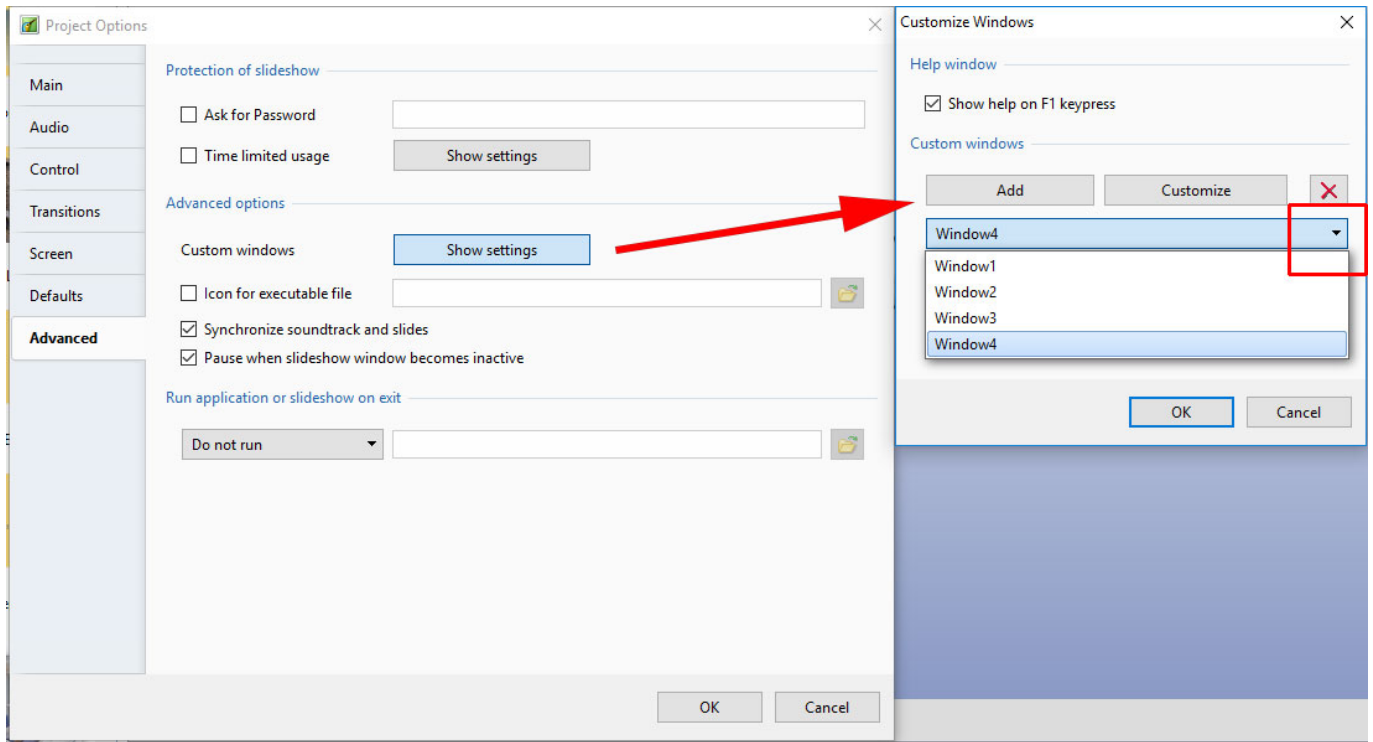
Printed on 2024/05/18 19:08



## Advanced Options

Custom Window:

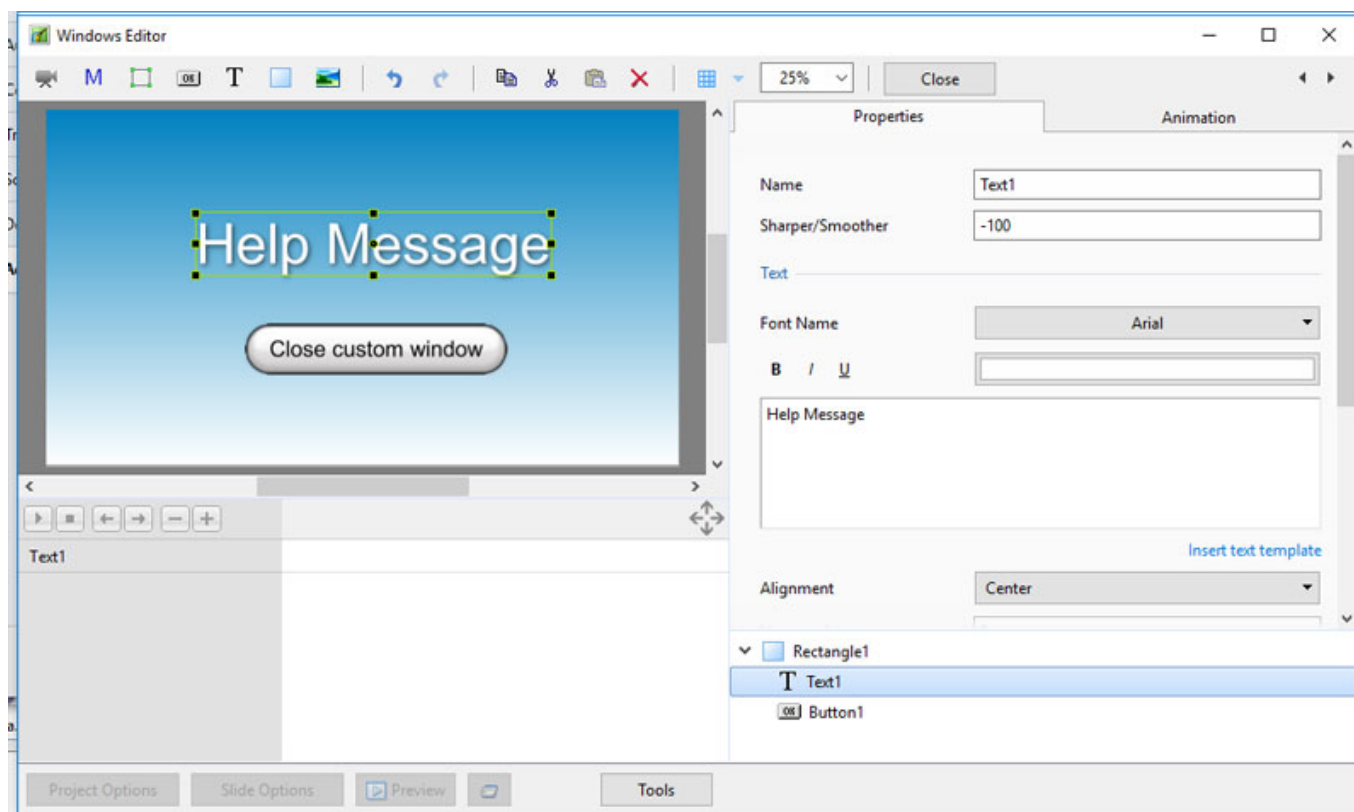
- Click on "Show Settings"
- Click on "Add" to create as many Custom Windows as required



- Use the Drop down Menu to select a Custom Window to Customize
- Click on “Customize” to create / adjust the appearance of the Custom Window



- Add a rectangle
- Add a Text Box with the message that you want to display etc
- Add a Button configured to “Close Window” when clicked

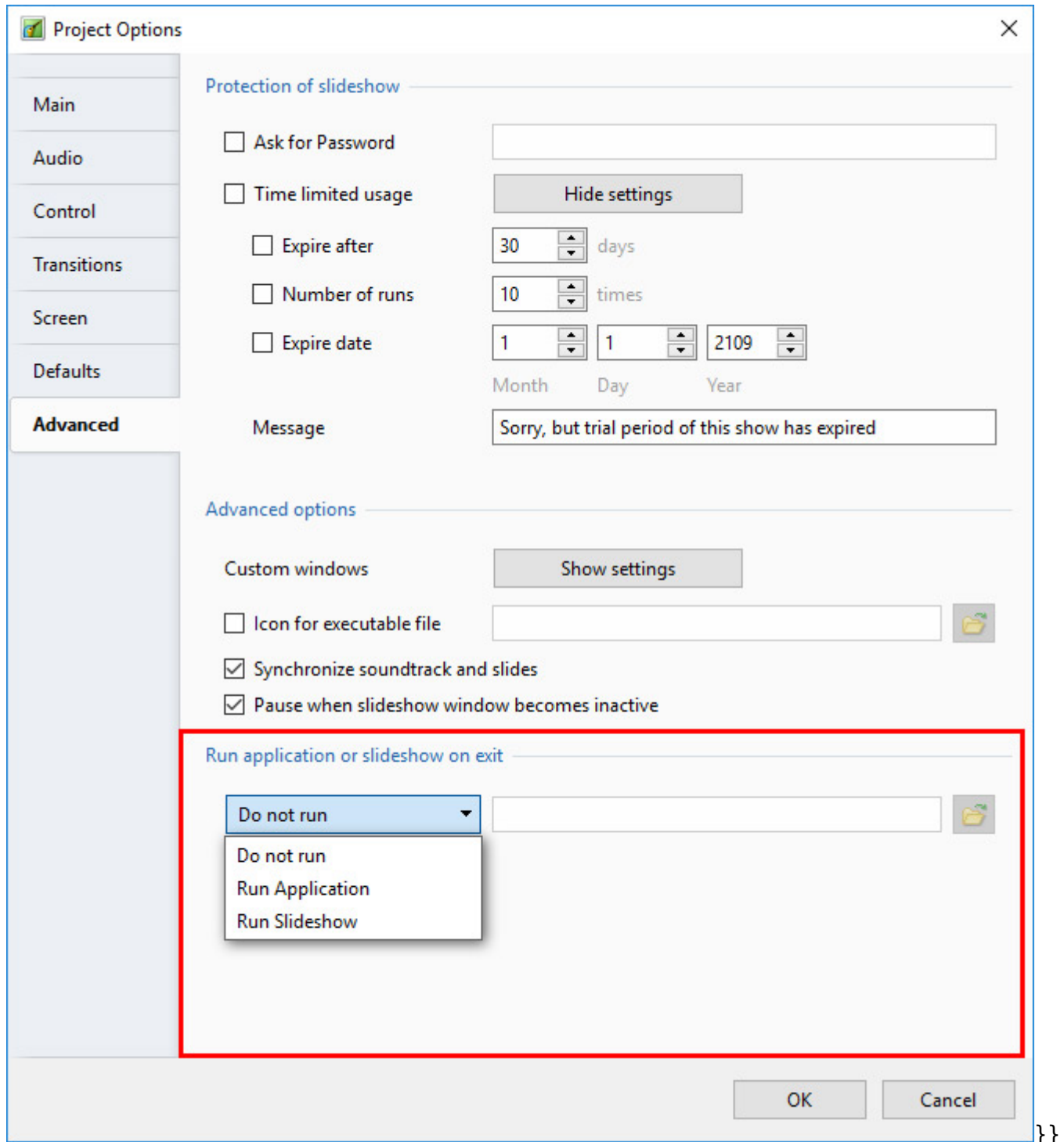


- Click on “Close” and OK the action (twice)

Please go to Objects and Animation [Properties Tab](#) Display a Custom Window

- Assign icon for executable file: This allows the user to select an icon from those stored on their computer or from an icon which has been created. The chosen icon will be associated with any exe file created from Pictures To Exe
- Synchronize soundtrack and slides: It is recommended that this option is ALWAYS selected. If not, when playing a show from part the way through, the associated audio tracks will start from the beginning whereas the slides will start from the chosen position;
- Pause when slideshow becomes inactive: If selected, the slideshow will pause in its execution if the focus is moved to another application which is running.

## Run Application or Slideshow on Exit



## Assign icon for executable file

This allows the user to select an icon from those stored on their computer or from an icon which has been created. The chosen icon will be associated with any exe file created from Pictures To Exe;

## Synchronize soundtrack and slides

It is recommended that this option is ALWAYS selected. If not, when playing a show from part the way through, the associated audio tracks will start from the beginning whereas the slides will start from

the chosen position;

## Pause when slideshow becomes inactive

if selected, the slideshow will pause in its execution if the focus is moved to another application which is running.

The second section “Protection of slideshow”, provides 4 setting options. The intended function of these options is to assist users who wish to use PicturesToExe for commercial purposes.

The final section “Run application or slideshow on exit” provides a feature to enable a subsequent application to run on completion of a show. This feature can be used to chain a number of shows together into a single continuous process.

From:  
<https://docs.ptavstudio.com/> - **PTE AV Studio**

Permanent link:  
[https://docs.ptavstudio.com/en-us/9.0/project\\_settings\\_1/project?rev=1572017443](https://docs.ptavstudio.com/en-us/9.0/project_settings_1/project?rev=1572017443)

Last update: **2022/12/18 11:20**

