

# Preset Styles

A description of PicturesToExe's built in preset styles.

## General Information

If images are “dragged” into the Slide List or are added via a right click and “Add...” command they are automatically assigned an “Index Number” which is essential for applying a Style. Images added to slides in Objects and Animation are not automatically assigned an Index Number.

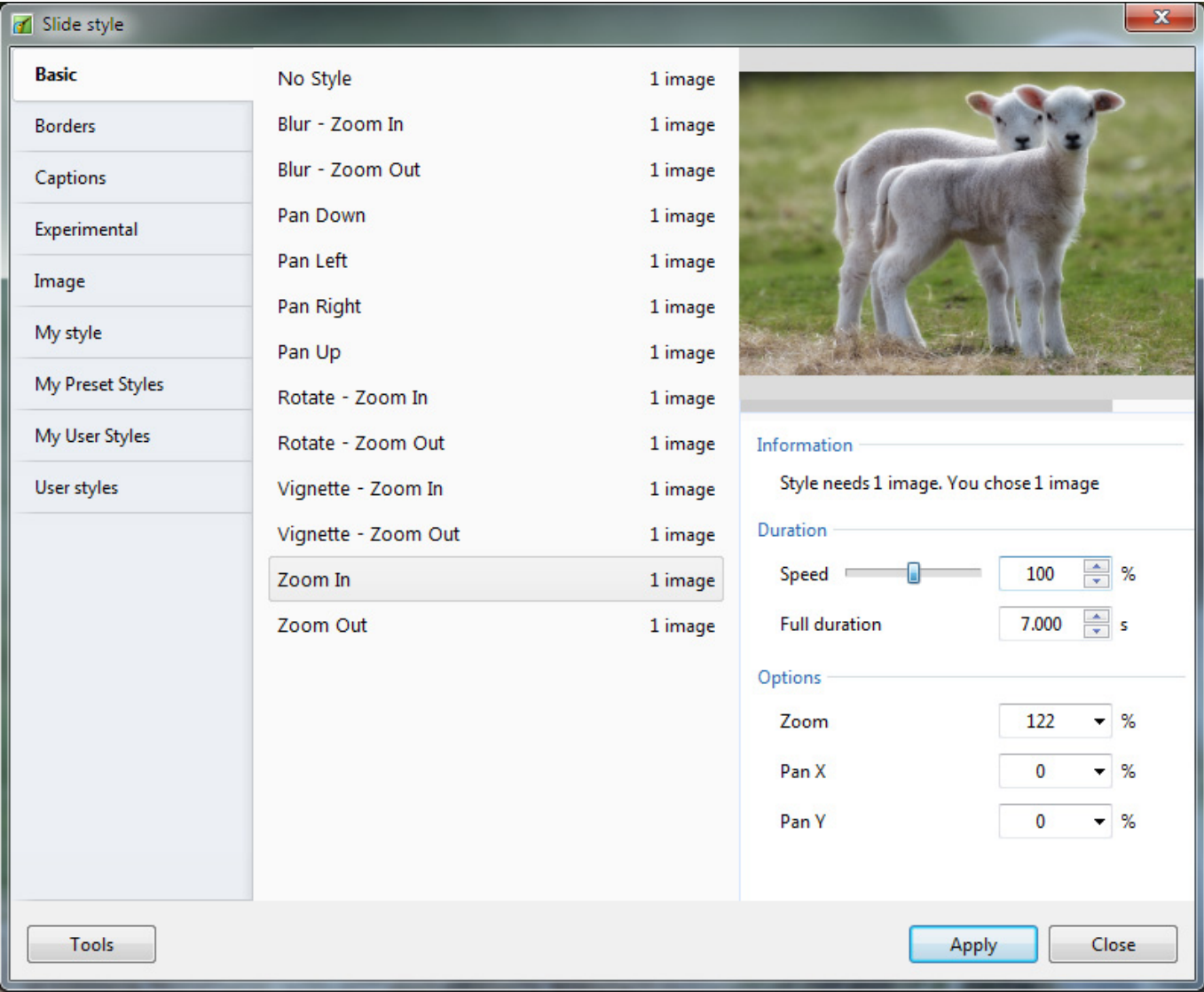
Images are refer to in the descriptions - these can also be video clips.

In all cases read the information in the “Slide Style” window. As well as a preview of the applied Style you are told if you have selected too few/many images.

The Speed and Full Duration controls allow for adjustment of the Duration of the Applied Style. If the Full Duration is shortened then the speed of the animation is increased (and vice versa).

New “Categories” or “User Folders” can be made during the (TOOLS) CREATE a Style process by Typing a new folder name into the Category Box

## Basic Styles



**Blur - Zoom In**

Uses a Custom Transition called “Dissolving with Blur”. Zooms from 100% to 122%.

**Blur - Zoom Out**

Uses a Custom Transition called “Dissolving with Blur”. Zooms from 122% to 100%.

**Pan Down**

Sets a 110% Zoom and pans the image down by shifting the Centre Control in the Animation Tab

**Pan Left**

Sets a 122% Zoom and pans the image left by shifting the Centre Control in the Animation Tab

**Pan Right**

Sets a 122% Zoom and pans the image right by shifting the Centre Control in the Animation Tab

**Pan Up**

Sets a 110% Zoom and pans the image up by shifting the Centre Control in the Animation Tab

**Rotate - Zoom In**

Zooms in to 122% and Rotates 4 degrees using the controls in the Animation Tab

**Rotate - Zoom Out**

Zooms from 122% to 100% and Rotates from 4 degrees to zero using the controls in the Animation Tab

**Vignette - Zoom In**

Adds a circular soft edged mask to create the background coloured vignette and Zooms from 100% to 122%. Optimised for a 4:3 aspect ratio.

**Vignette - Zoom Out**

Adds a circular soft edged mask to create the background coloured vignette and Zooms from 122% to 100%. Optimised for a 4:3 aspect ratio.

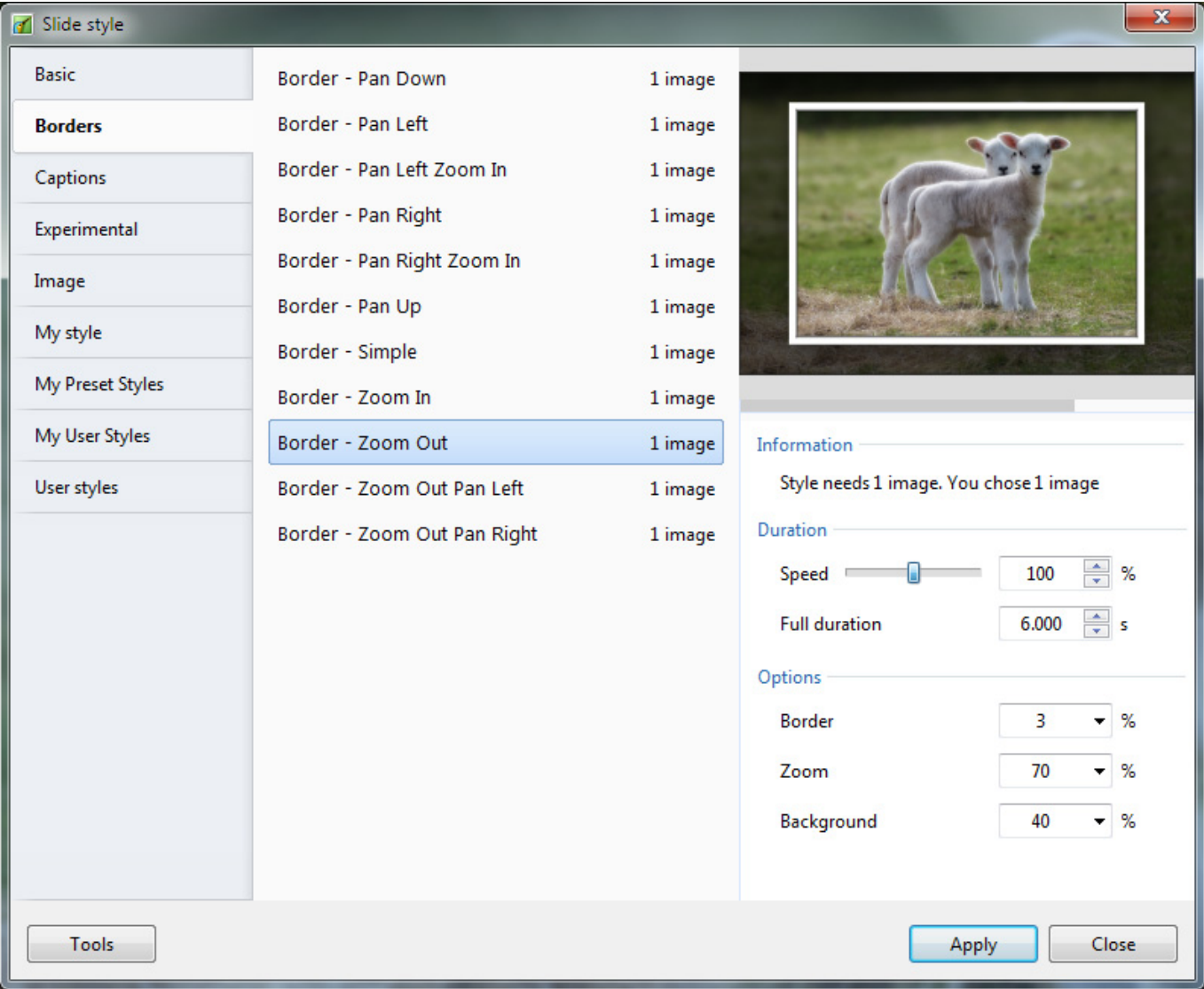
**Zoom In**

A simple zoom from 100% to 122% using the zoom control in the Animation Tab

**Zoom Out**

A simple zoom from 122% to 100% using the zoom control in the Animation Tab

**Borders**



All variations have the controls available for Border Size, Image Size (Zoom) and Background Image Opacity.

**Border - Pan Down**

Uses the Border control in Adjust Image and Border. Uses a combination of Rotate X and Pan Z in 3D Parameters to obtain the effect. The main image is also used as a background image.

**Border - Pan Left**

Uses the Border control in Adjust Image and Border. Uses a combination of Rotate Y and Pan Z in 3D Parameters to obtain the effect. The main image is also used as a background image.

**Border - Pan Left Zoom In**

Uses the Border control in Adjust Image and Border. Uses the Pan and Zoom Control in the Animation Tab to create the Pan and Zoom effect.

**Border - Pan Right**

Uses the Border control in Adjust Image and Border. Uses a combination of Rotate Y and Pan Z in 3D Parameters to obtain the effect. The main image is also used as a background image.

**Border - Pan Right Zoom In**

Uses the Border control in Adjust Image and Border. Uses the Pan and Zoom Control in the Animation Tab to create the Pan and Zoom effect.

**Border - Pan up**

Uses the Border control in Adjust Image and Border. Uses a combination of Rotate X and Pan Z in 3D Parameters to obtain the effect. The main image is also used as a background image.

**Border - Simple**

Uses the Border control in Adjust Image and Border.

**Border - Zoom In**

Uses the Border control in Adjust Image and Border. Uses the Zoom Control in the Animation Tab to obtain the effect

**Border - Zoom Out**

Uses the Border control in Adjust Image and Border. Uses the Zoom Control in the Animation Tab to obtain the effect

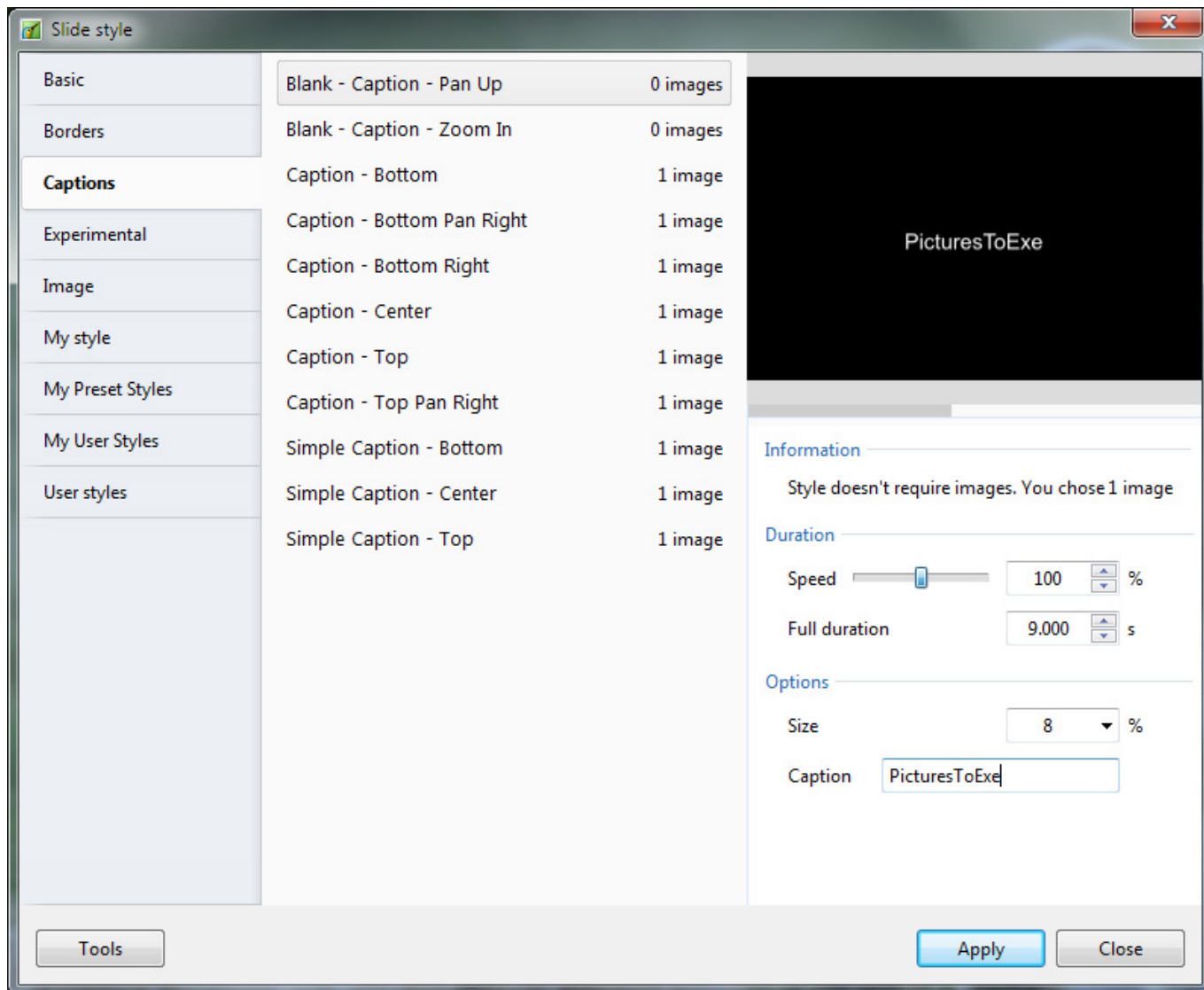
**Border - Zoom Out Pan Left**

Frame 1 controls the Zoom and the Pan. The Main Image is faded via the Opacity setting in the Animation Tab. The main image is also used as a background image.

**Border - Zoom Out Pan Right**

Frame 1 controls the Zoom and the Pan. The Main Image is faded via the Opacity setting in the Animation Tab. The main image is also used as a background image.

## Captions



The first two styles create Blank Slides with Captions. All other styles in this category require a single image to be selected in the slide list before applying the style.

### Caption - Pan Up

Apply to a Blank Slide - Caption Fades while panning upwards. Options are Size of Text Comment and the Caption Text.

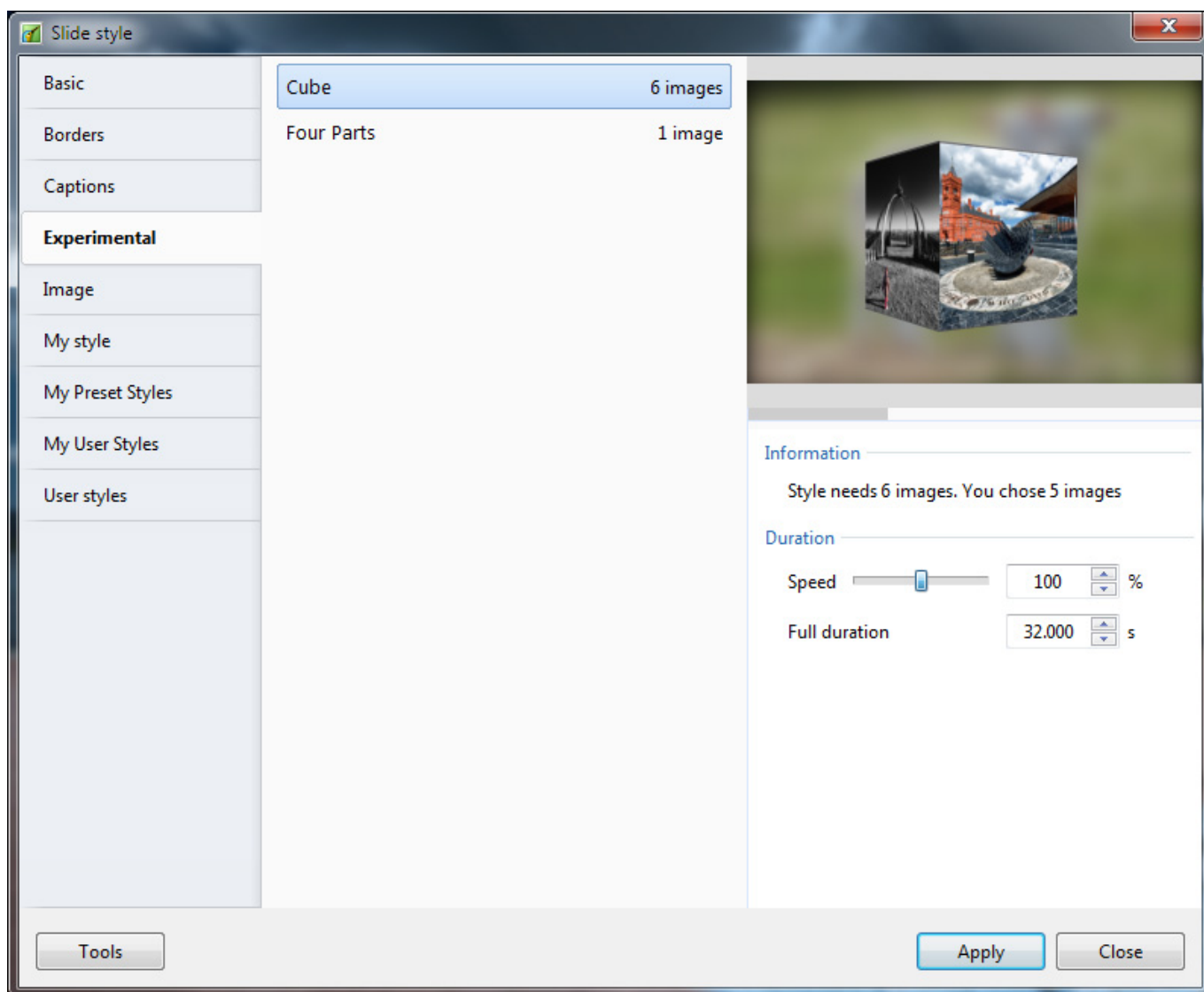
### Caption - Zoom In

Apply to a Blank Slide - Caption Fades while Zooming In. Options are Zoom % Size for Start and End and the Caption Text.

### Caption Bottom

Style needs a single image. Main Image Zooms from 122% to 100%. A Frame shadow is added to the bottom of the slide (Properties Tab). Text fades in and out. Options are Zoom % for Main Image and the Caption Text.

# Experimental



## Cube

Add 6 images to the Slide List. Any Aspect Ratio can be used for the original images. The first image added to the Slide List is used as a blurred background image in the applied style.

The applied Style creates a Cube from the six images. Each of the six images has the “Adjust Image and Border / Crop” Tool added to crop to the 1:1 Aspect Ratio. If an aspect ratio other than 1:1 is used for the original images then the centre portion of that image appears in the cube.

After applying the Style the crop is adjustable using the “Offset X/Y” and Zoom can be applied using the “Scale” control.

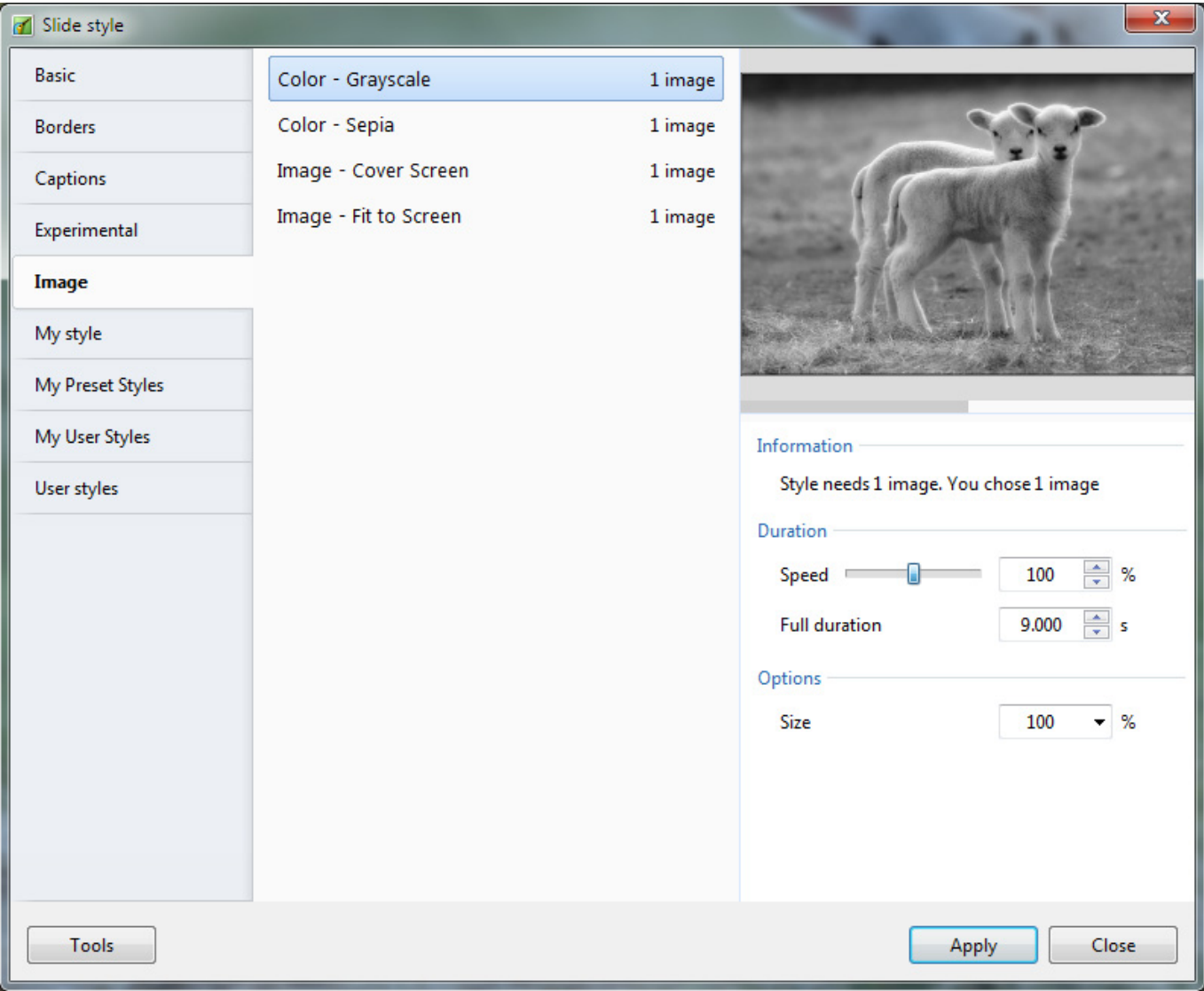
The “Adjust Image and Border / Border” control can be used to apply a border around the cropped image. The colour and width of the border are adjustable.

## Four Parts

Add one image to the Slide List. Four instances of the Main Image are used to create the Four Parts

via the “Adjust Image and Border / Canvas” Tool. The (blurred) Four Parts are then brought together to form the complete image which is reduced in size and displayed (slightly rotated) over a blurred, larger than full size (100%) background version. Uses the “3D Parameters” Control to acheive the “swivelling” of the Frame.

## Image



### Color - Grayscale

Converts the Image to Grayscale using the “Color Adjustment” Tool in Objects and Animation / Animation Tab. Option is Size of Image in %.

### Color - Sepia

Converts the Image to Sepia Tone using the “Color Adjustment” Tool in Objects and Animation / Animation Tab. Option is Size of Image in %.

### Image - Cover Screen

Converts an Image(s) which has a different aspect ratio to the Project aspect ratio to cover the screen

with no background color showing. Multi selection will convert multiple slides. Use with slides containing a Single Main Image.

### **Image - Fit to Screen**

Converts an image to Fit to the Width or the Height of the Project. If the aspect ratio of the Image differs from the Project Aspect Ratio then the Background color will show. Use with slides containing a Single Main Image.

From:

<https://docs.pteamstudio.com/> - **PTE AV Studio**

Permanent link:

<https://docs.pteamstudio.com/en-us/9.0/techniques/presetstyles>

Last update: **2022/12/18 11:20**

