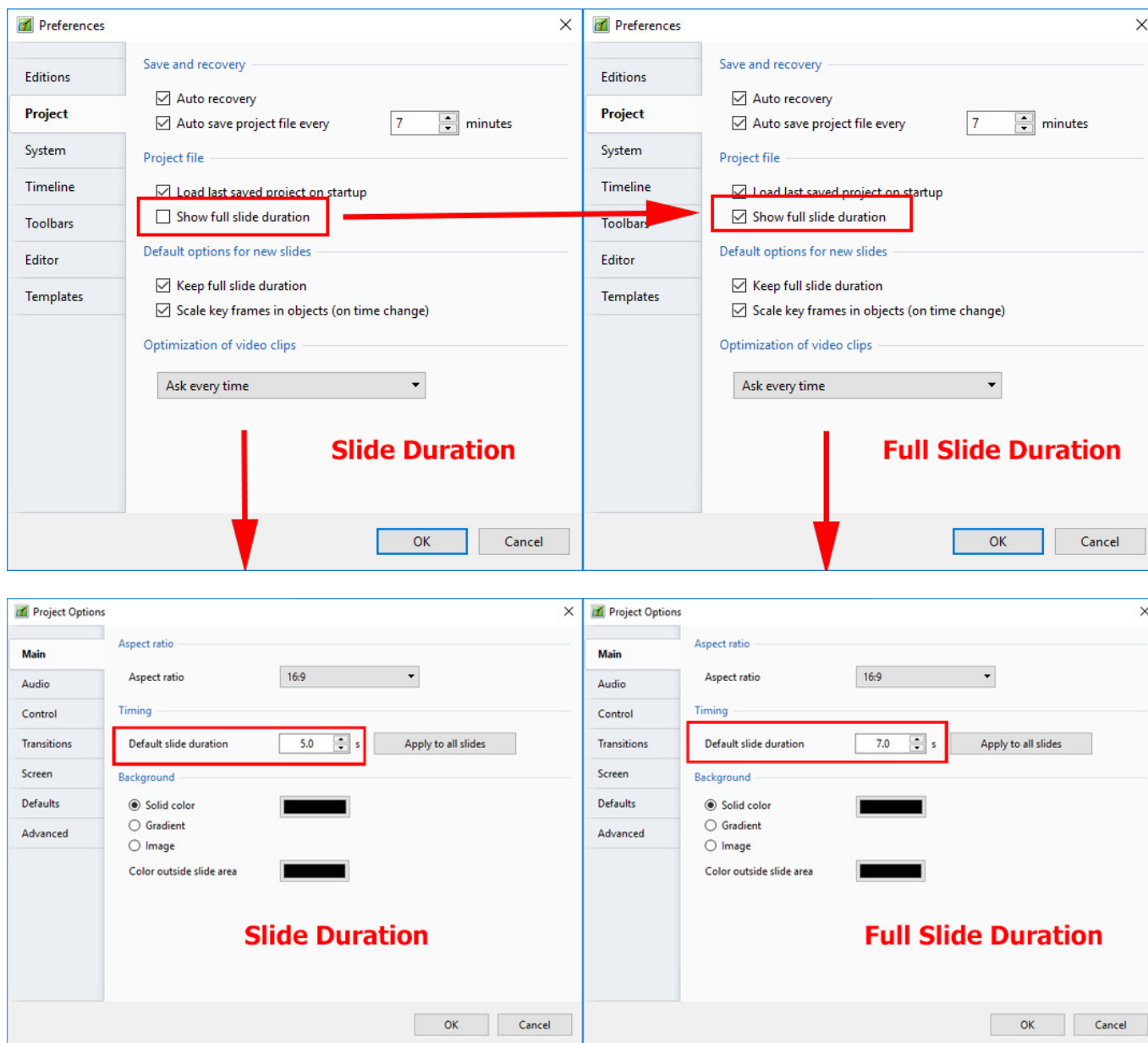


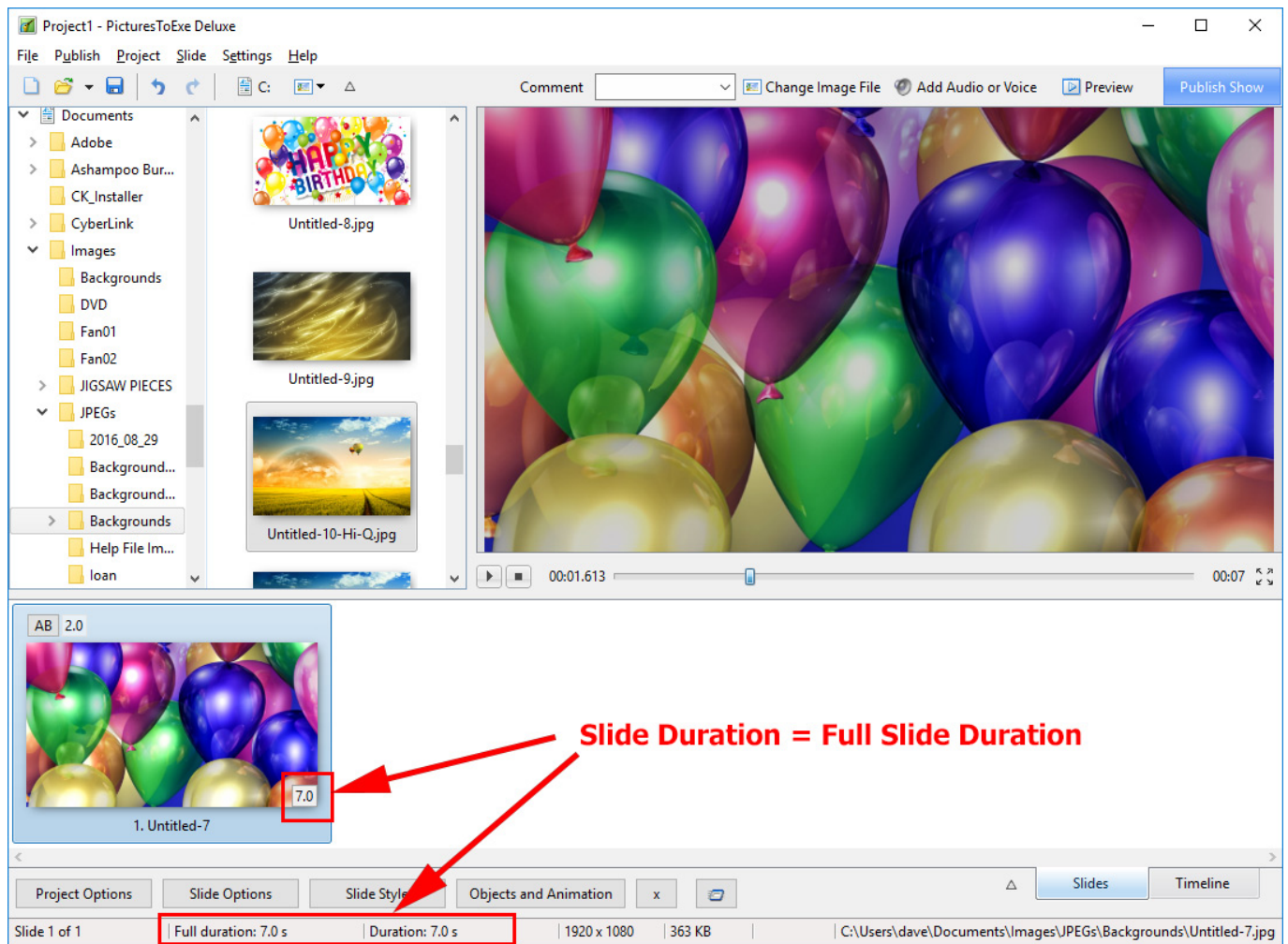
Slide Duration

Slide Duration and Full Slide Duration

Depending on the settings of Settings / Preferences and Project Options the duration seen in the Slide List can change.

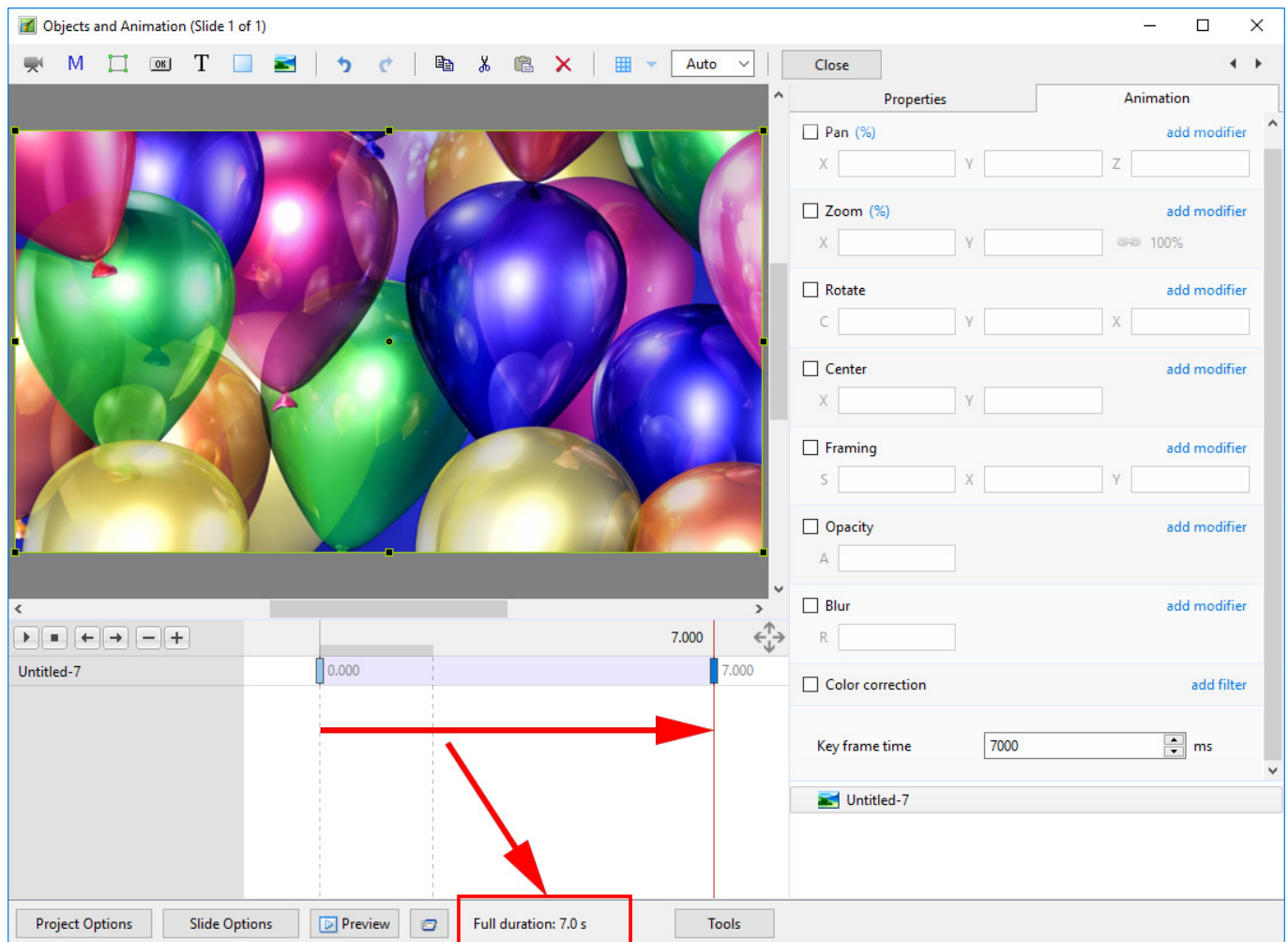


If a single slide is added to the Slide List the Main Screen View looks like this:



The Status bar shows the Full (Slide) Duration and the (Slide) Duration. The Slide Icon displays the Slide Duration. For a single slide the Duration will equal the Full Duration because there is no following slide transition time to take into account - or the following slide transition time is zero.

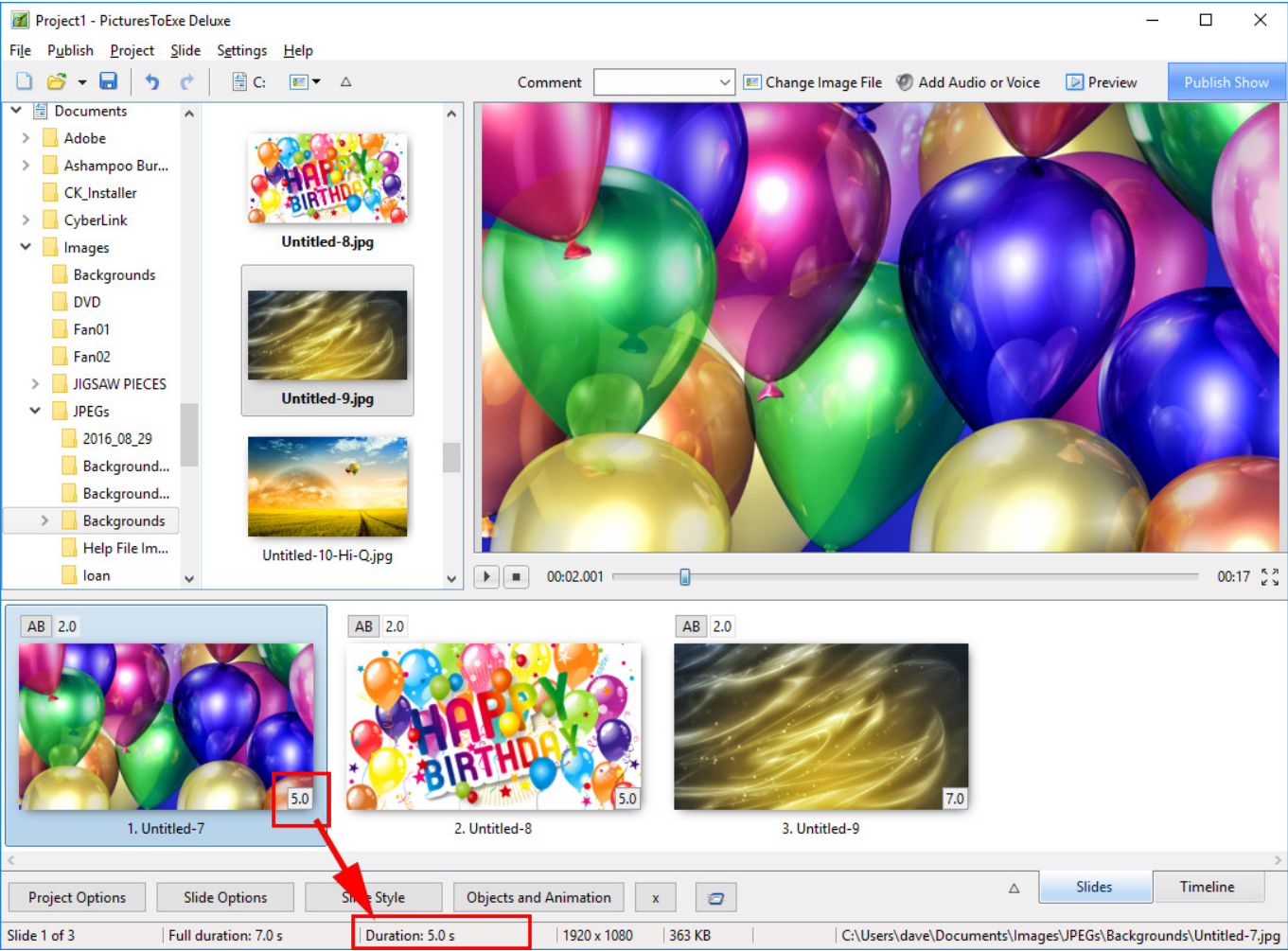
The corresponding Objects and Animation Screen looks like this:



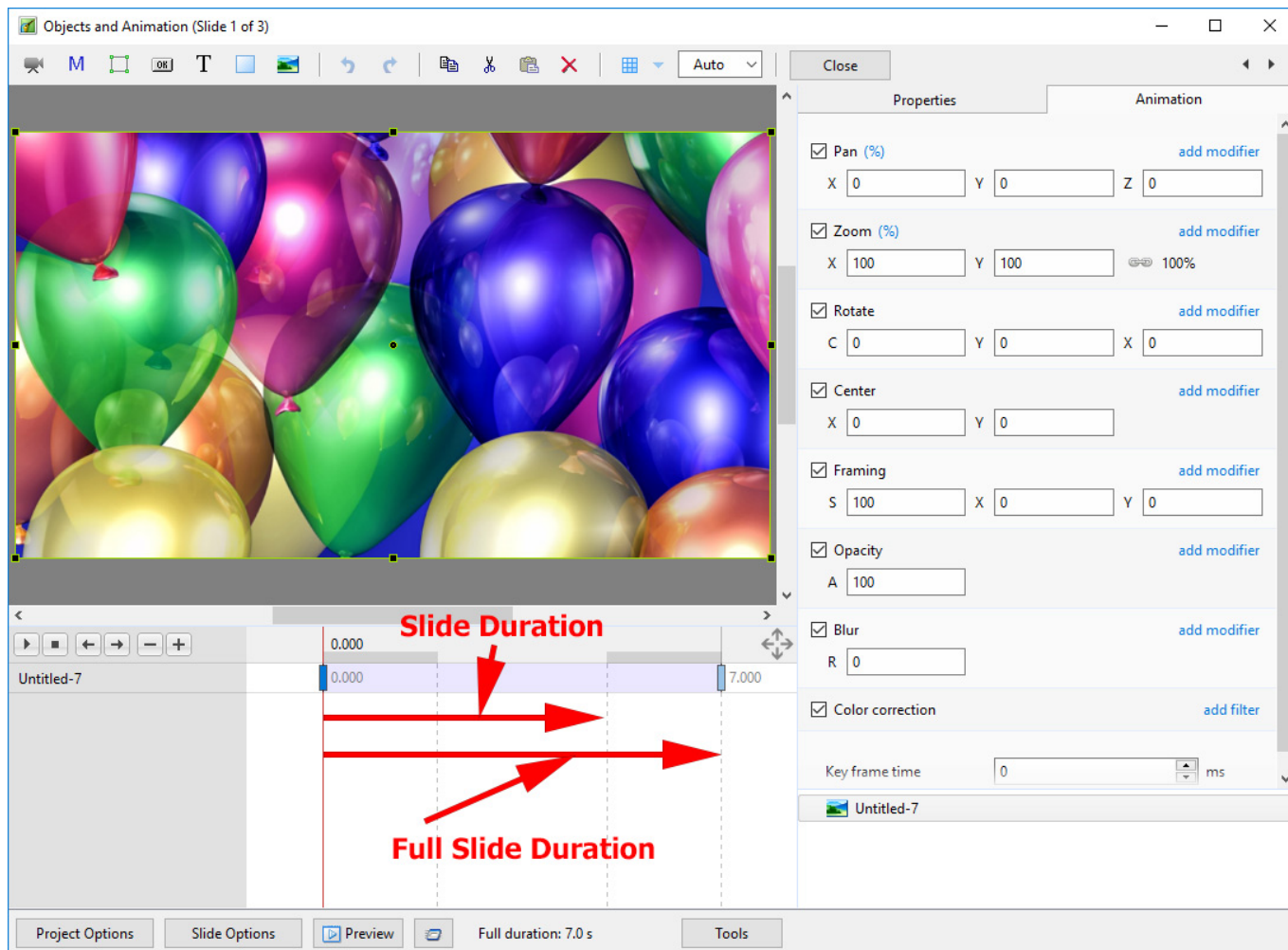
Adding another slide

Show Full Slide Duration Un-Ticked:

Adding a second slide with a 2 second transition time causes a change in the displayed (Slide) Duration. Note that the Full (Slide) Duration remains the same.



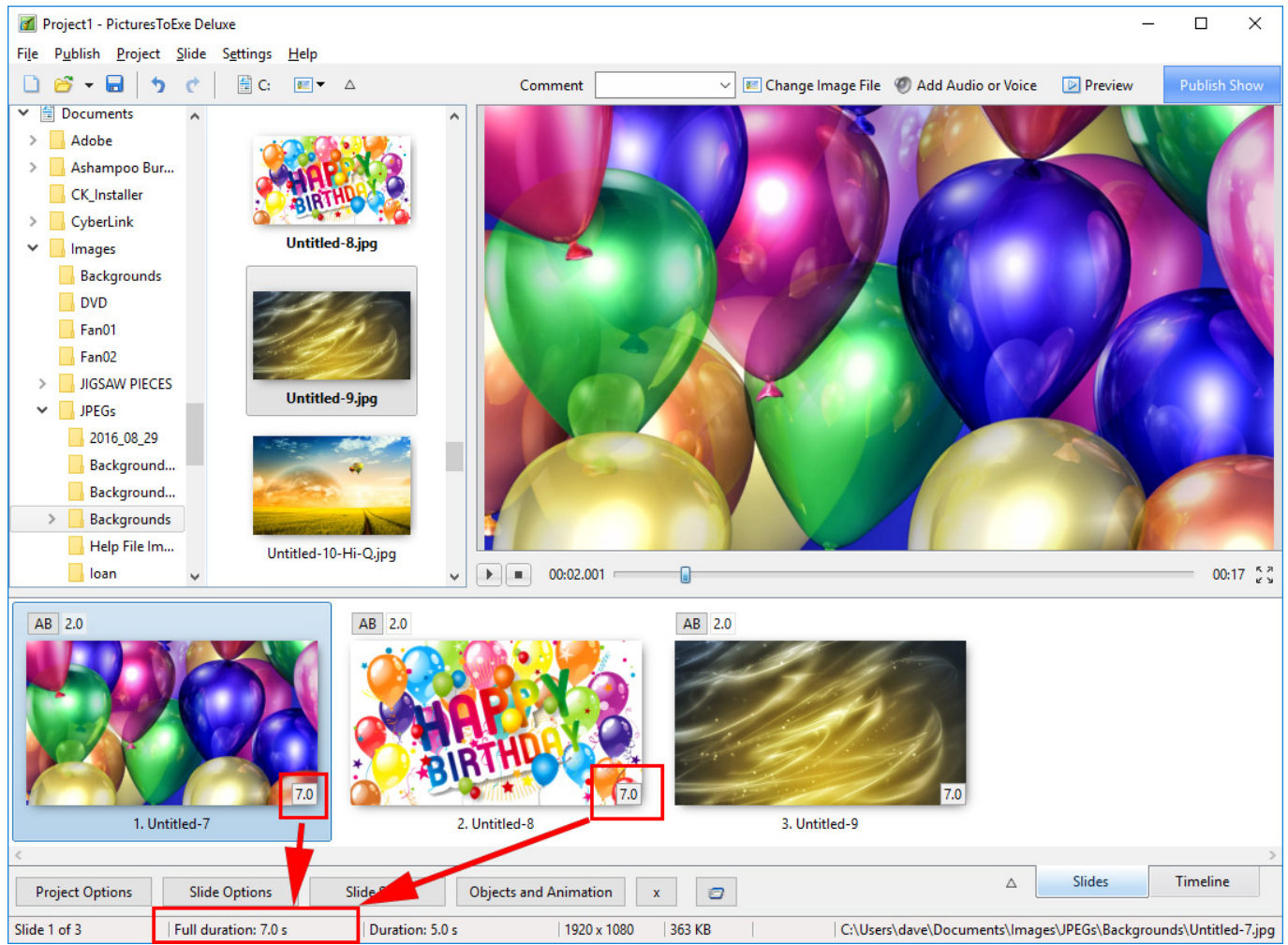
Objects and Animation View:



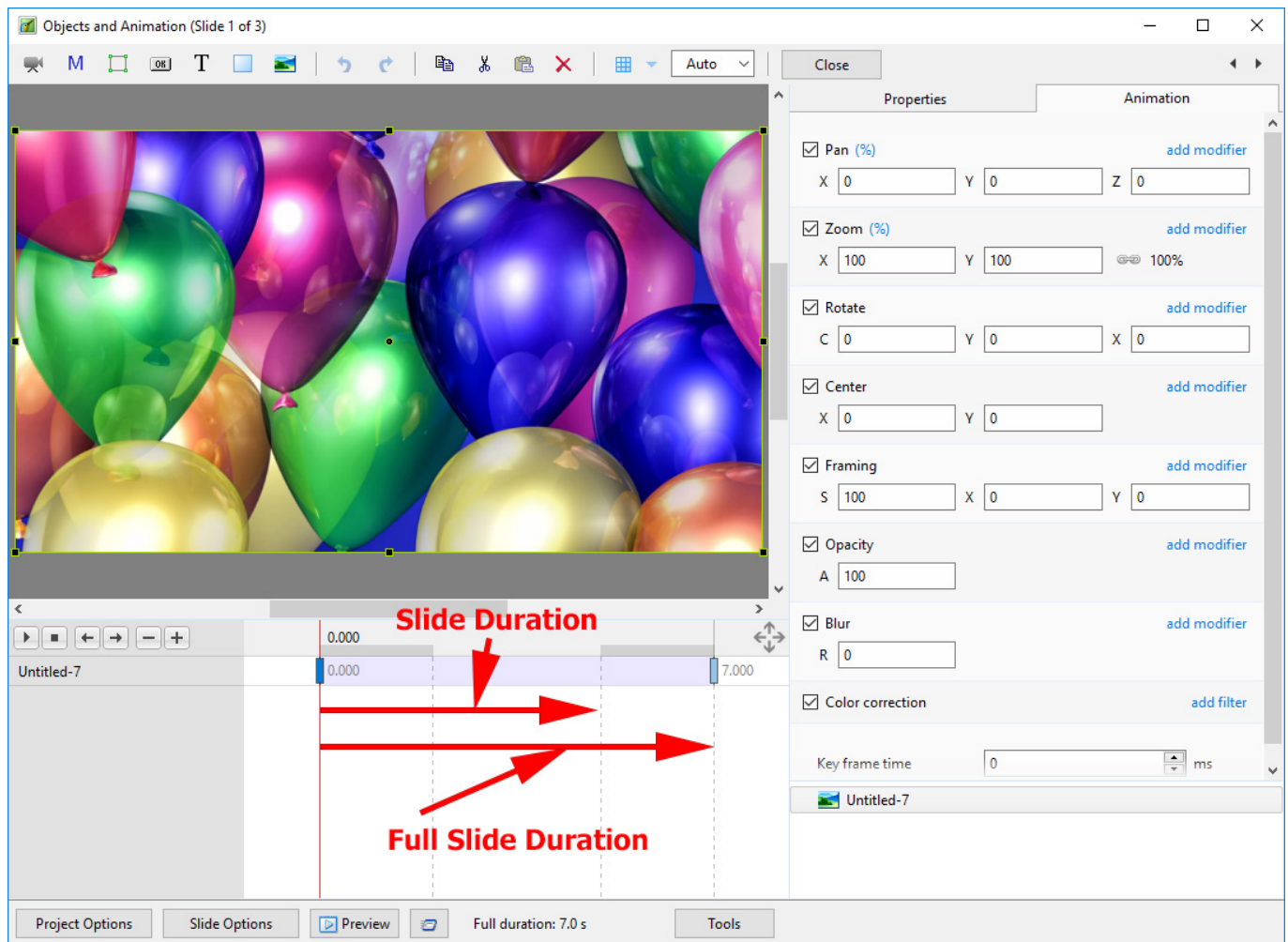
The (Slide) Duration of Slide 1 remains at 5 seconds but because Slide 1 is visible from the beginning of its own transition to the end of the Slide 2 transition (at varying opacities) its Full (Slide) Duration is 7 seconds.

Show Full Slide Duration Ticked:

Adding a second slide with a 2 second transition time causes a change in the Duration Icon on the Slide. Note that the Full (Slide) Duration and Full (Slide) Duration remain the same.



The Objects and Animation Screen remains the same.

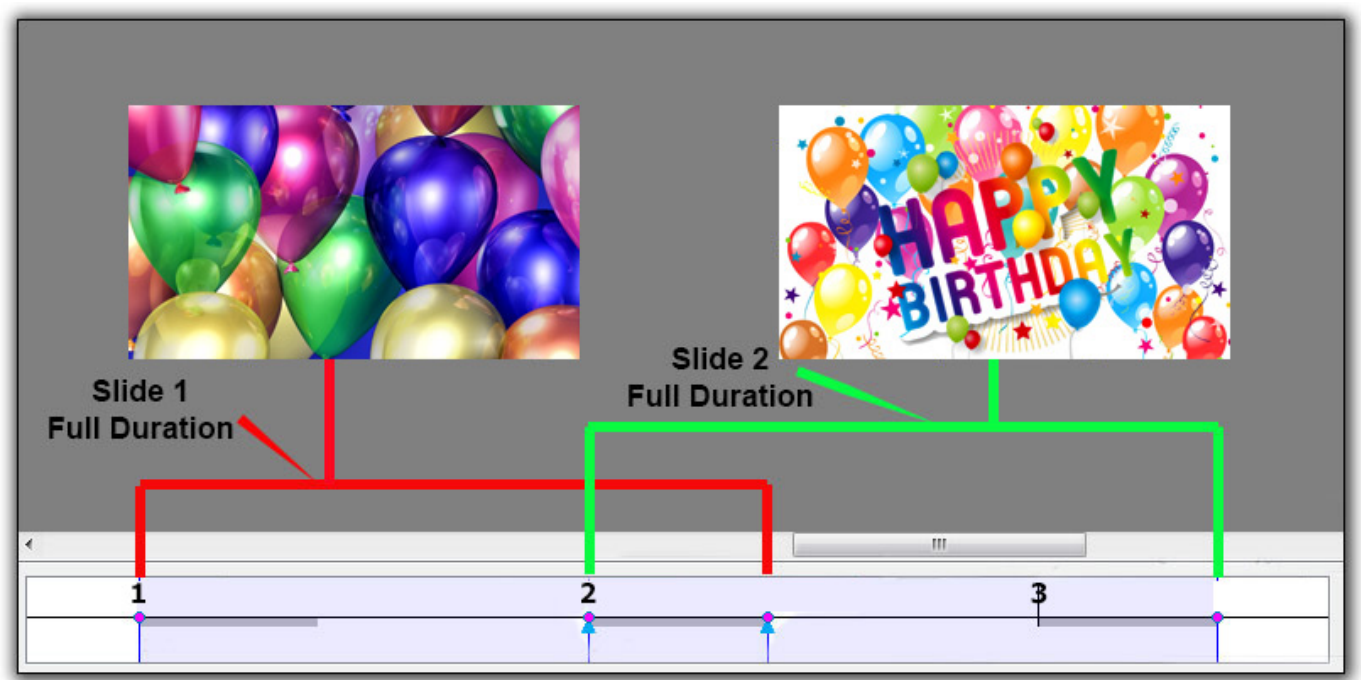


Example

Key Frames in Slide 1 are placed at Zero and 7 seconds (7000ms)

Key Frames in Slide 2 are placed at 5 seconds (0ms) and 12 seconds (7000ms)

*Below is a ****Simulation**** of two slides in Objects and Animation Screen:*



The Timeline View:

The screenshot displays the PTE AV Studio software interface. The top menu bar includes File, Publish, Project, Slide, Settings, and Help. The main workspace is divided into a left sidebar with a file tree, a central preview area, and a bottom timeline. The file tree shows a project named 'Project1 - PicturesToExe Deluxe' with various folders like 'Images', 'Backgrounds', 'DVD', 'Fan01', 'Fan02', 'JIGSAW PIECES', 'JPEGs', '2016_08_29', 'Background...', 'Background...', 'Help File Im...', and 'loan'. The preview area shows a slide with a background image of colorful balloons. The timeline at the bottom shows three slides: '1. Untitled-7', '2. Untitled-8', and '3. Untitled-9'. Red arrows and text labels indicate the duration settings for Slide 1 and Slide 2. The labels are: 'Slide 1 Duration', 'Slide 1 Full Duration', 'Slide 2 Duration', and 'Slide 2 Full Duration'. The status bar at the bottom shows 'Slide 1 of 3', 'Full duration: 7.0 s', 'Duration: 5.0 s', '1920 x 1080', '363 KB', and the file path 'C:\Users\dave\Documents\Images\JPEGs\Backgrounds\Untitled-7.jpg'.

From:

<https://docs.ptavstudio.com/> - PTE AV Studio

Permanent link:

https://docs.ptavstudio.com/en-us/9.0/how_to_v9/duration

Last update: 2022/12/18 11:20

