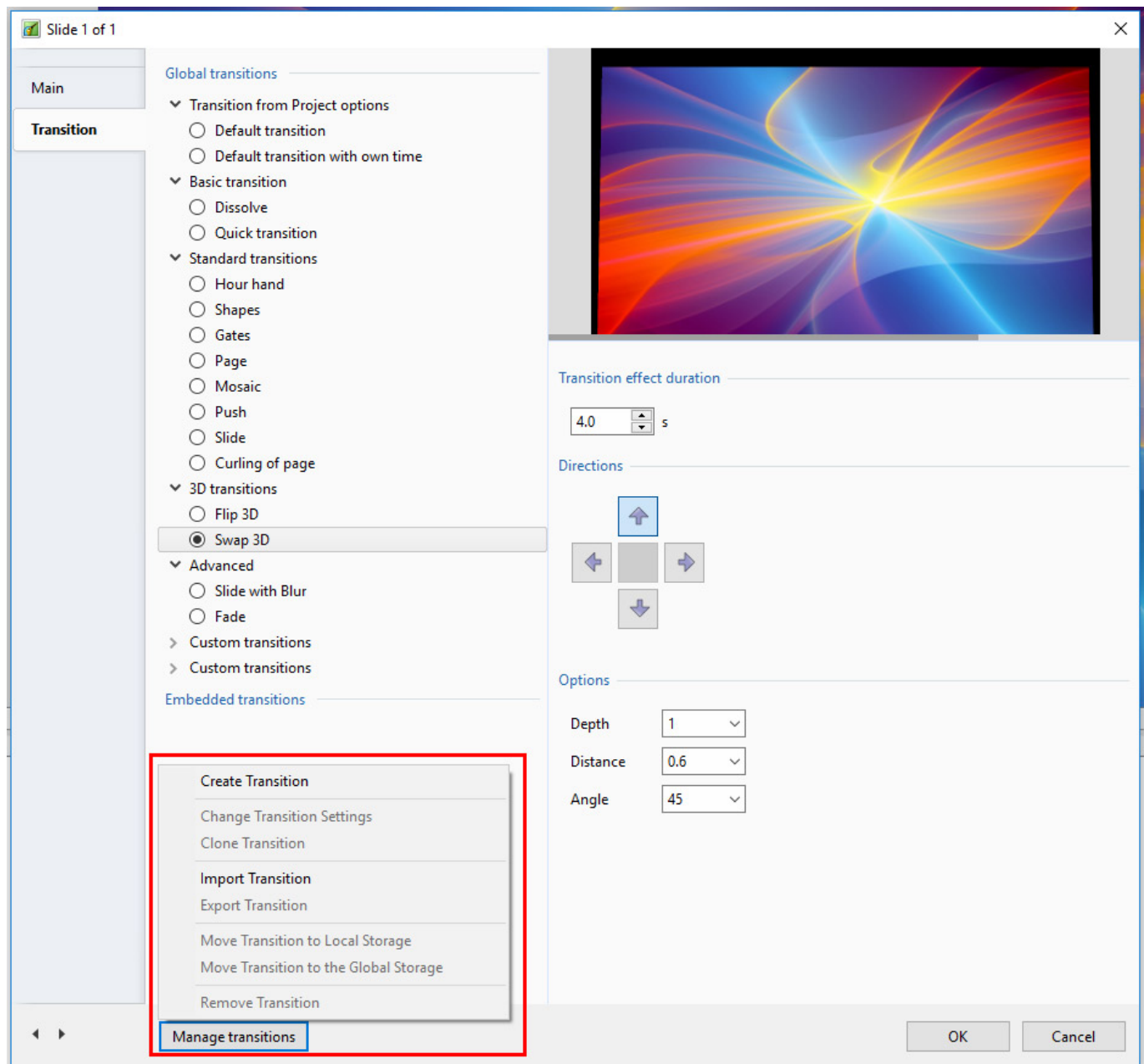


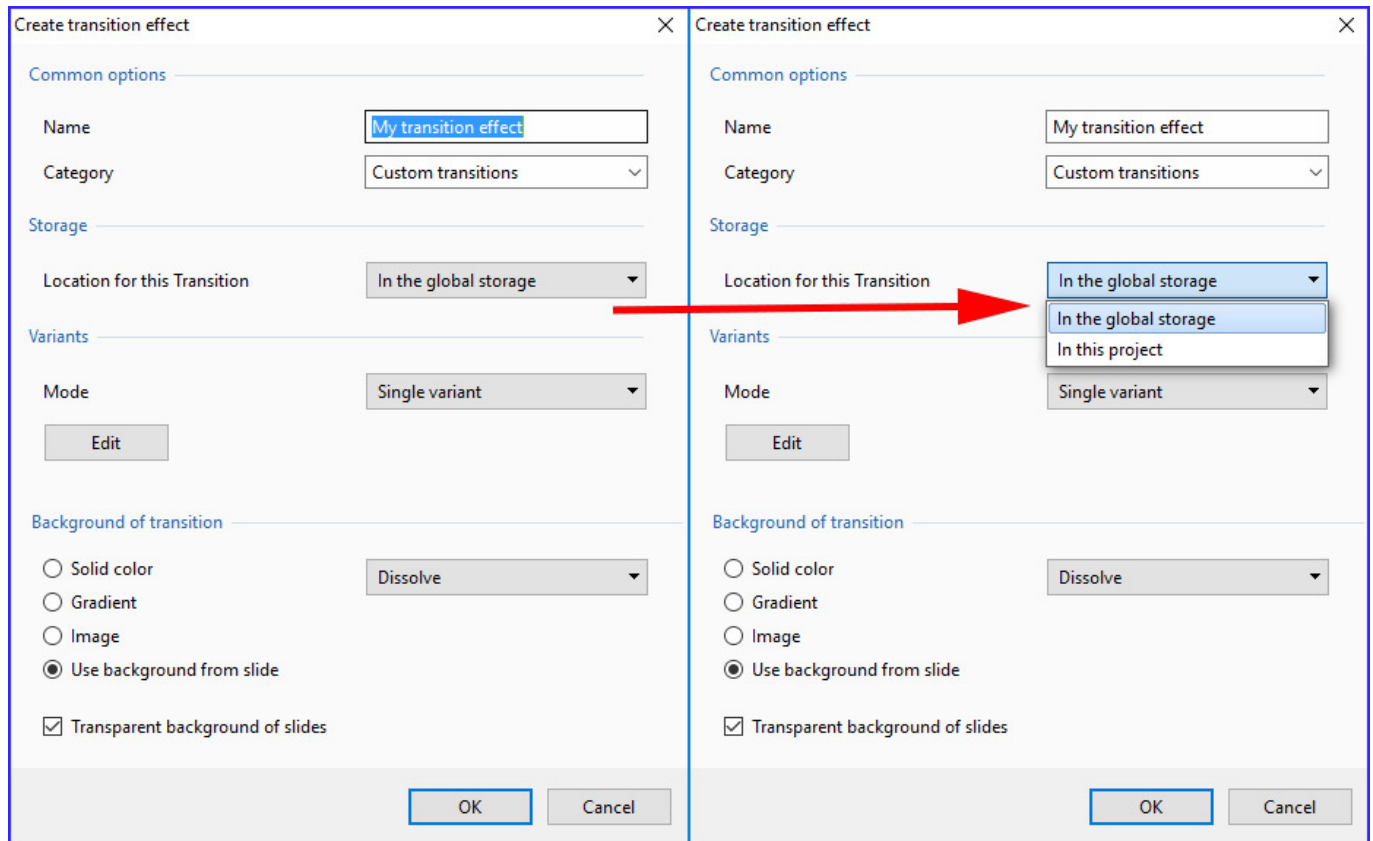
Custom Transitions

- Choose a Slide in the Slide List
- Click on the “AB” Transition Button
- Click on **Manage Transitions**



- In Version 9 Custom Transitions can be saved either in the “Global Storage” or “Embedded” into the Current Project
- Click on Create Transition to enter the “Create Transition Effect” Editor

Create Transition



- By choosing "Global Storage" the Custom Transition will be available for future projects
- CT's in the Global Storage can be Cloned and Moved to the Embedded Transitions area (current project)
- By choosing "This Project" the Custom Transition will be available in this project only
- **Choose a Variant**

Create transition effect

Common options

Name

My transition effect

Category

Custom transitions

Storage

Location for this Transition

In the global storage

Mode

Single variant

Single variant

Multiple variants - list

Multiple variants - buttons

Edit

Background of transition

☐ Solid color

Dissolve

☐ Gradient

☐ Image

☒ Use background from slide

☒ Transparent background of slides

OK

Cancel

Choose Background Options

- Background Solid Colour - Choose a Colour for the Background of the Transition
- Gradient - Choose a two colour Gradient for the Background of the Transition
- Image - Choose an Image for the Background of the Transition
- Use Background from Slide (Default) - This option chooses to use a Background added via Slide Options or the Splitter as the Background of the Transition
 - The Splitter Background overrides the Slide Options Background
 - Further Options are to Dissolve between Slide One and Slide Two Backgrounds or use the Slide One or Slide Two Background during the Transition
- Transparent Background of Slides (Default) - This Option chooses whether a Main Image at less than 100% of Full Screen animates independent of its Background

Change transition effect

Common options

Name

slide left

Category

Custom transitions

Storage

Location for this Transition

In the global storage

Variants

Mode

Single variant

Edit

Background of transition

☐ Solid color

☐ Gradient

☐ Image

☒ Use background from slide

☒ Transparent background of slides

Dissolve

Dissolve

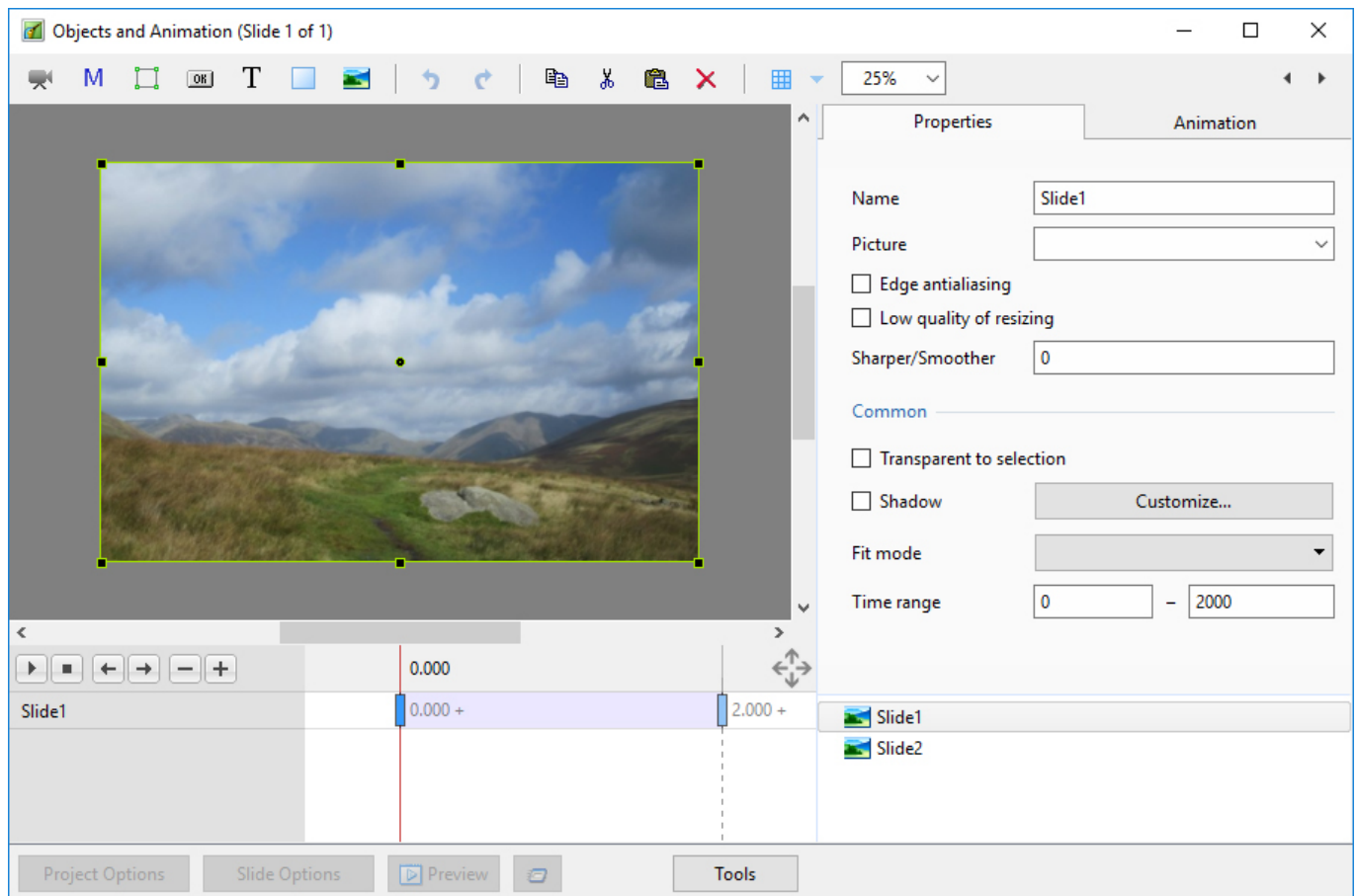
Next slide

Previous slide

OK

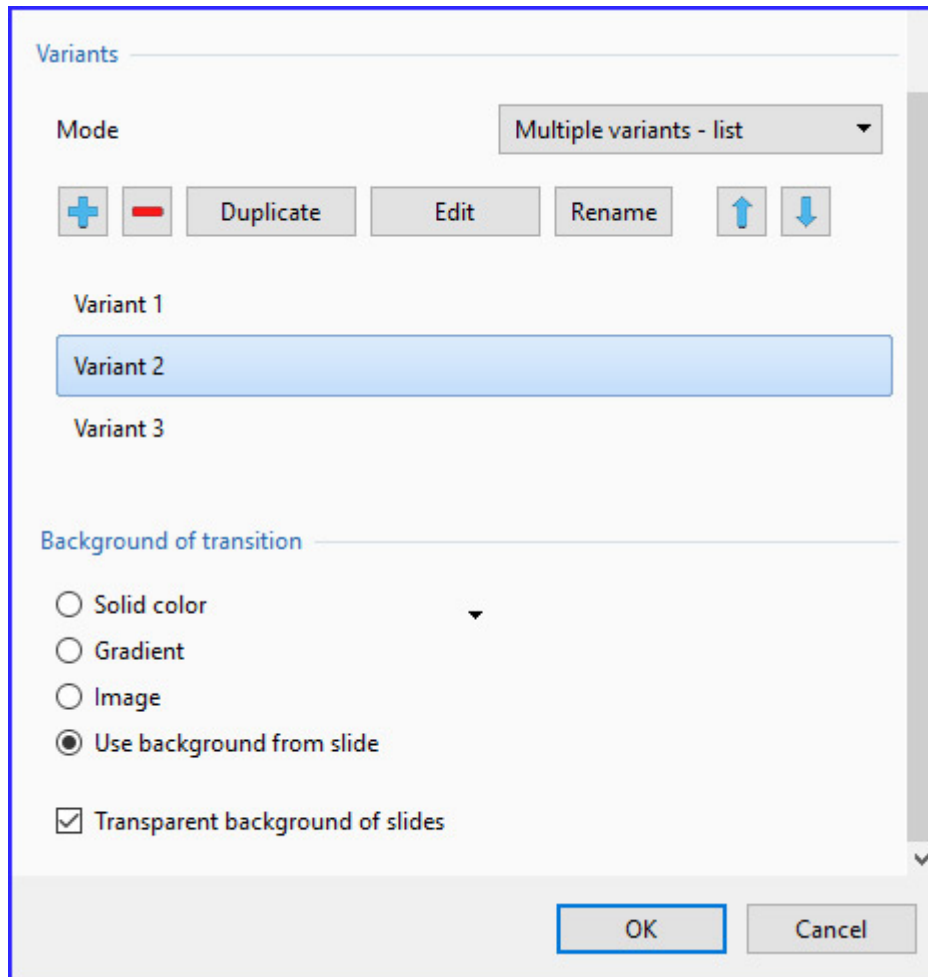
Cancel

Single Variant



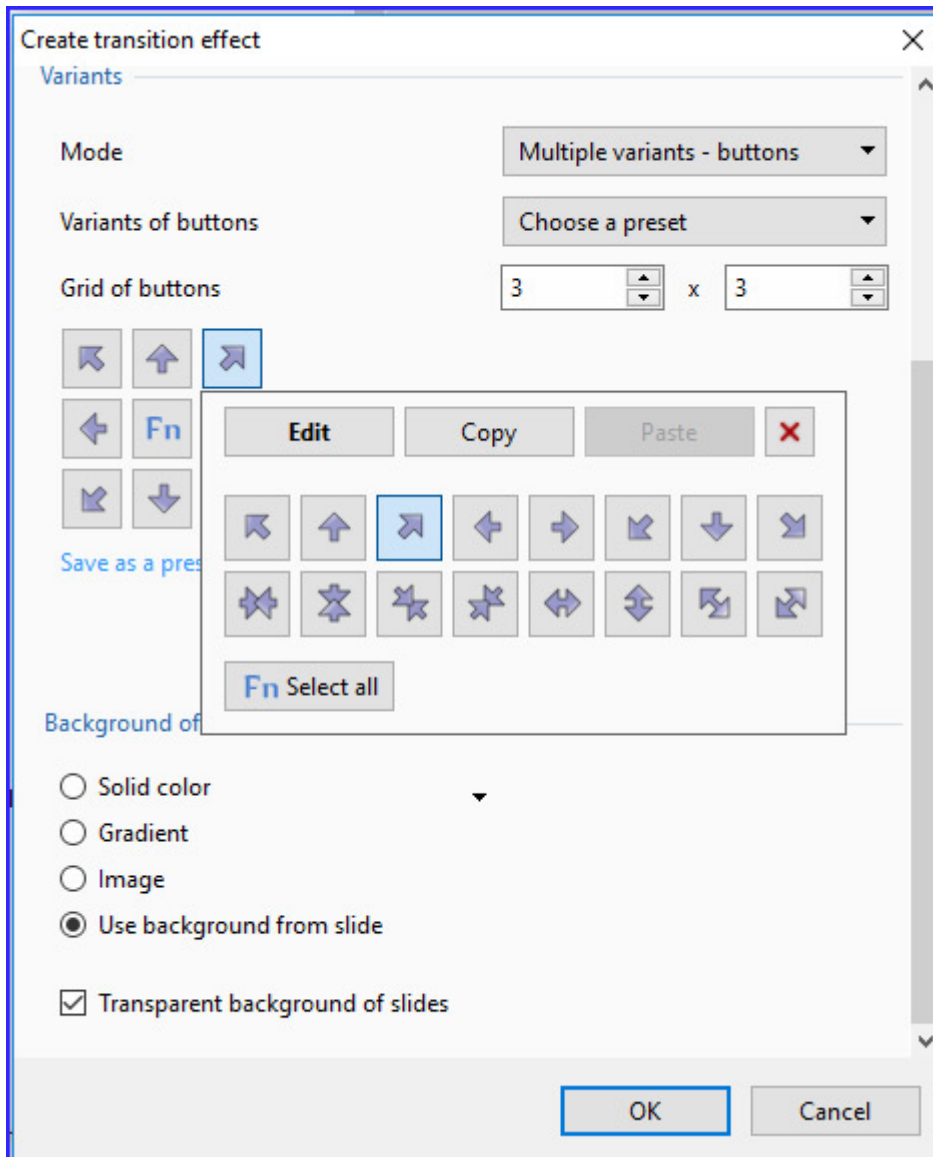
- The Aspect Ratio is automatically chosen to suit the Project Options AR

Multi Variant - List



- Click on “+” to add a Variant to the List
- Click on “-” to Delete a Variant
- Click on Edit to proceed to the Editor
- Close the Editor Window by clicking on the “X” at top right to return to this Window
- Click on OK to Save

Multi Variant - Buttons



- Choose a Preset Variant
- Click on an Arrow Button
- Click on Edit to proceed to the Editor
- Close the Editor Window by clicking on the “X” at top right to return to this Window
- Click on OK to Save

After Creating a Custom Transition it would be good practice to Export it to a folder somewhere on your HD called “Exported Slide Styles”

Global vs Embedded Transitions

- The **Global Transitions** section contains both the Preset PTE Transitions and the Custom Transitions which you can Create yourself or Import from the Forum etc.
- The “Manage Transitions” button has a dropdown menu which allows the Option to “Clone” a Custom Transition
- The Cloned Copy can then be either edited to create a Variation or “Moved to the Local Storage” (**Embedded Transitions**)
- When creating a “Backup in ZIP” (BIZ) to export to another PC which might not have the Custom Transition it is included for use when the BIZ is unzipped

- The Global Custom Transitions are Embedded in Executable files

Import Custom Transitions

- Custom Transitions use the “.pteeff” Suffix
- Choose a Folder for Custom Transitions in Settings / Preferences / Templates
- All downloaded or otherwise acquired Custom Transitions should be stored in this folder
- Click on the AB Transition Button
- In the Transitions Tab click on Manage Transitions / Import Transition
- Navigate to the folder for Custom Transitions and choose the Custom Transition to be Imported
- Choose a Custom Transition to be Imported and click on Open
- The Custom Transition will be loaded in to the Custom Transition Section

Embedded Transitions

- To Move a Custom Transition to the Embedded Transition Section highlight the Transition and use the Right Click Menu and choose “Move Transition to Local Storage”
- Alternatively highlight the Transition and click on Manage Transitions and choose “Move Transition to Local Storage”
- Custom Transitions can also be “Cloned” before moving to the local storage
- Embedded Transitions (Local Storage) are saved in the Project

Export Custom Transitions

- Custom Transitions use the “.pteeff” Suffix
- Choose a Folder for Custom Transitions in Settings / Preferences / Templates
- All downloaded or otherwise acquired Custom Transitions should be stored in this folder
- Click on the AB Transition Button
- In the Transitions Tab click on the Custom Transition to be Exported
- Click on Manage Transitions / Export Transition
- Navigate to the folder for Custom Transitions and click on Save

From:

<https://docs.ptavstudio.com/> - **PTE AV Studio**

Permanent link:

<https://docs.ptavstudio.com/en-us/9.0/customtransition/main>

Last update: **2022/12/18 11:20**

